

# Lincoln Center

2014/15







LC Kids invites families to deepen their engagement with the arts through performances and art-making activities for all ages, all year round.



Dear Friends:

In the past year, we've made significant progress toward Lincoln Center's mission of **Great Art for All**. That means ensuring that the world's best performing arts are available to everyone, regardless of age, race, or socioeconomic background. It also means embracing a future in which those incredible masterpieces are accessible anywhere—whether it's online, on television, at the movies, in schools and libraries, or right here at Lincoln Center.

Our progress is evident all around us, from the strength of the talent on our stages to the gorgeous visual artworks throughout Lincoln Center—not to mention the stunning 16-acre campus itself. And it's also evident throughout NYC, thanks to our growing roster of education and community outreach programs, which are now in all five boroughs. This is an exciting time of unparalleled growth at Lincoln Center. But the most important characteristic shared by all of these initiatives is improved access for our current and prospective audiences.

Our newest initiatives to serve this mission include: **LC Kids**, a year-round family membership program that includes interactive experiences as well as performances and special gatherings for all ages; **Boro-Linc**, which sends the arts into underserved communities in NYC; and **Middle School Arts Audition Boot Camp**, which prepares rising eighth graders from low-income neighborhoods to audition for competitive performing arts high schools.

As a 21st century performing arts institution, we knew we needed a more prominent digital presence, and we are proud of our accomplishments in the technology area. Today, **LincolnCenter.org** is itself a work of art. It's now simpler, faster, and more user-friendly. You can quickly learn about what's on the calendar for every resident organization on campus and easily buy tickets or join a membership group. We also launched a **free mobile app** where you can get information on performances and buy tickets directly. Lincoln Center's livestream initiative also continues to grow. In the first half of 2015, we shared 25 events—up from 12 the entire previous year. Each one had thousands of people tuning in live, from New York City to places like South America, Germany, and Japan. The same programs later earned up to 100,000 additional views on our website and YouTube. We firmly believe that technology is the key to helping art transcend borders.

It's obvious that Lincoln Center has turned its sights to the future, but we never lose sight of the people, performances, and programs that helped us get here. September 24, 2015, was the official inauguration for **David Geffen Hall**, home to the New York Philharmonic and future site of **Lincoln Center Legends**. As the premiere hall of fame for the performing arts, this space will celebrate the artists, leaders, and philanthropists who have made Lincoln Center the world's leading performing arts center. It will offer multisensory, interactive, and educational exhibits—while also serving as a central base for the organization's archives.

David Geffen Hall will be prominently featured on our new **Digital Campus Tour**. A complement to the guided tours that run daily out of the David Rubenstein Atrium, this self-guided option will soon be downloadable—for free—on your smartphone. Visitors can learn all about our campus, its history, its architecture, and most important of all—the art that takes place here.

Of course, we could never achieve these goals without support from the philanthropists named in these pages—not to mention all of our dedicated patrons, the city of New York, and the five million visitors who enjoy Lincoln Center annually. We'd like to extend heartfelt thanks to each and every one of these contributors—as well as our exceptional Board of Directors, devoted staff, ten fellow resident organizations, and sensational artists—for being part of the Lincoln Center family. Your support is what keeps us on the cutting edge and drives us to work harder every year to put Lincoln Center at the forefront of the performing arts.

We hope you're excited to continue this journey with us.

Sincerely,

Katherine Farley  
Chairman

Jed Bernstein  
President



Lincoln Center Local's Silent Disco lights up the night in Hunter's Point South Park in Queens.

# Engaging...

Lincoln Center connects people to the finest performing arts from all over the world. But, too often, the audience is limited to those who can afford tickets and travel away from home. That excludes far too many New Yorkers who, for various reasons, may not be able to access transportation or purchase full-price tickets. Lincoln Center strives to engage audience members from all walks of life, whether it's in their own communities or through low-cost and free programming on campus. Our community engagement programs are constantly expanding to enrich the lives of as many people as we can, especially with the help of city partners like the Department of Education and the New York Public Library.





### Lincoln Center Local

Lincoln Center partners with the Brooklyn Public Library, New York Public Library, and Queens Library systems to make high-caliber performing arts programming accessible to residents in all five boroughs. Through **Lincoln Center Local**, community partners host performances and artist talk-backs. Partnering libraries also offer free screenings and stream content from Lincoln Center.

Another product of Lincoln Center Local is **Silent Disco**, a free event which began as part of Midsummer Night Swing. In September 2014, Silent Disco traveled to Hunter's Point South Park in Queens. About 1,200 guests stopped by to enjoy the custom dance floor with views of Manhattan. We now have community partners in all five boroughs and hosted five nights of Silent Disco throughout NYC in 2015.

### Poet-Linc

In partnership with Urban Word NYC and the NYC Youth Poet Laureate Program, Lincoln Center presents **Poet-Linc** as part of the free programming at the David Rubenstein Atrium. City teenagers collaborate to create and perform new works; the final showcase featured 26 young poets onstage in front of an audience of 300. All participants—which include court-involved youth from Passages Academy and the Boys Town non-secure placement facility in Brooklyn—are published in the annual Poet-Linc anthology.

### Boro-Linc

Launched in March 2015, **Boro-Linc** partners with cultural organizations, city leaders, and Lincoln Center resident organizations to bring family-friendly performances and activities to communities that have been historically underrepresented on our campus. The pilot season took place at the Casita Maria Center for Arts and Education in the South Bronx in June 2015. Boro-Linc will reach all five boroughs by 2016.

### Family-Linc

**Family-Linc** is an initiative that welcomes low-income families to the Lincoln Center campus. Lincoln Center provides participants with prime seats at popular performances for \$10. Families are invited to participate in workshops, backstage visits, and artist talks to deepen their engagement and create unique experiences for them to enjoy together.

### Community Artist Residencies

The **Community Artist Residencies** program serves homeless families, court-involved youth, and public housing residents in partnership with local agencies such as Women In Need and Lincoln Square Neighborhood Center. Professionals guide participants in transformative experiences with the arts during residencies spanning eight weeks to several months.



Last June, Boro-Linc sent free performances and art-making activities into the South Bronx; this year the popular community outreach program will travel to all five boroughs of NYC.



Boro-Linc sends teaching artists and resources from all 11 Lincoln Center resident organizations into NYC communities for free family programs. The Boro-Linc pilot season kicked off in the South Bronx in 2015.



High school students collaborate with peers and mentors to prepare and perform poems during the Poet-Linc spoken word showcase in the David Rubenstein Atrium.



Family-Linc participants meet several times a year for performances, activities, and behind-the-scenes access at Lincoln Center.



*Delusion of the Fury*, an epic work by American iconoclast Harry Partch, was presented by Lincoln Center Festival in a new production directed by Heiner Goebbels.

# Presenting...

This year, all of Lincoln Center's exceptional programming—whether dance, music, theater, or a riveting combination—was accompanied by an increased emphasis on community engagement. Inviting and involving people of all ages, throughout all five boroughs, from all economic backgrounds, has been our foremost agenda. From diversity of content to free concerts, with interactive discussions and family events, we have never made stronger strides in one single year to provide Great Art for All.

## Great Performers

**Great Performers**—a series that highlights exceptional orchestras, ensembles, and soloists from around the world—presented more than 30 performances from November 2, 2014 to May 10, 2015. The 49th season included groups like the Gewandhaus Orchestra of Leipzig, with conductor Riccardo Chailly, and the Budapest Festival Orchestra, with its music director Iván Fischer, not to mention special guests like Joshua Bell and Emanuel Ax.

## White Light Festival

For the fifth year, the **White Light Festival** provided audiences with transcendent and introspective experiences through music. One highlight of the 2014 White Light Festival was the Berliner Philharmoniker's performance of Bach's *St. Matthew Passion*, ritualized by Peter Sellars. Other standout performances included MacArthur Award-winning puppetry artist Basil Twist's *The Rite of Spring*, Pulitzer Prize-winning composer Caroline Shaw's collaboration with Roomful of Teeth, and director William Kentridge's take on Schubert's *Winterreise*.

## American Songbook

**American Songbook** delivered on its promise of unforgettable evenings in intimate settings with solo shows from diverse artists ranging from the jazzy Grace McLean to *Smash*'s Megan Hilty—not to mention Broadway legends Billy Porter and Norm Lewis. The lineup included husband and wife duo Shovels & Rope, the Villalobos Brothers, and tributes to Nina Simone and Billie Holiday by Meshell Ndegeocello and Joey Arias, respectively.





### Midsummer Night Swing

**Midsummer Night Swing** added sizzle to the summer with 15 nights of swing, salsa, hustle, tango, samba, disco, and more under the stars at Damrosch Park. Each year, this series draws over 85,000 people to experience the excitement of social dancing. Evenings kick off with a short dance lesson followed by live music from exceptional artists like Aurora Nealand and The Royal Roses, Jody Watley, and José “El Canario” Alberto. Moves were made to big band music from the Gordon Webster Big Band, Orquesta SCC, and the Harlem Renaissance Orchestra. This year also included the return of Silent Disco, where music can only be heard through headphones. Midsummer Night Swing offers low-cost tickets and free participation in the plaza surrounding the dance floor.

### Lincoln Center Festival

Bringing an eclectic mix of artists from around the world, **Lincoln Center Festival's** 20th season drew over 53,000 audience members. Performances included an orchestral extravaganza of the music from Tim Burton's iconic films, the intimate puppet mastery of Georgian Rezo Gabriadze, a cinematic staging of *Kafka on the Shore* from Japan's Ninagawa Company, the ambitious Druid Theatre Company of Ireland in their seven-hour marathon adaptation of Shakespeare's history plays, the Cleveland Orchestra in a galvanizing revival of *Daphne* by Richard Strauss, and the visually stunning National Ballet of China.

### Lincoln Center Out of Doors

**Lincoln Center Out of Doors** has been a summertime favorite since 1974. It draws annual audiences of over 150,000 to dozens of performances and special events spanning Lincoln Center's plazas and public spaces—free of charge. The 45th season's lineup included Randy Newman, Joe Bataan, Judy Collins, Afropunk, and the Muscle Shoals All-Stars. MacArthur Foundation Fellow Michelle Dorrance danced *The Blues Project*. There was also a special tribute to the late choreographer Geoffrey Holder by Garth Fagan Dance. The final week included the second annual Americanafest NYC, featuring Watkins Family Hour and Fiona Apple, as well as Lyle Lovett and his Large Band.

### Mostly Mozart Festival

The **Mostly Mozart Festival** is a classic summer series celebrating Mozart's legacy. Between July 25 and August 22, 2015, audiences had 17 chances to catch its resident ensemble, the Mostly Mozart Festival Orchestra, with nine performances led by Renée and Robert Belfer Music Director Louis Langrée—including a free preview concert. Guest artists included Jeremy Denk, Joshua Bell, and Emanuel Ax, plus the Emerson String Quartet. In a triumph for the festival, Mostly Mozart showcased the U.S. stage premiere of George Benjamin's *Written on Skin*, the first opera in a series of partnerships between Lincoln Center and the New York Philharmonic.



Renée and Robert Belfer Music Director Louis Langrée conducts the Mostly Mozart Festival Orchestra, marking his 13th summer as part of the Lincoln Center family.



Dominican salsa legend José “El Canario” Alberto captivates the crowd at Midsummer Night Swing.





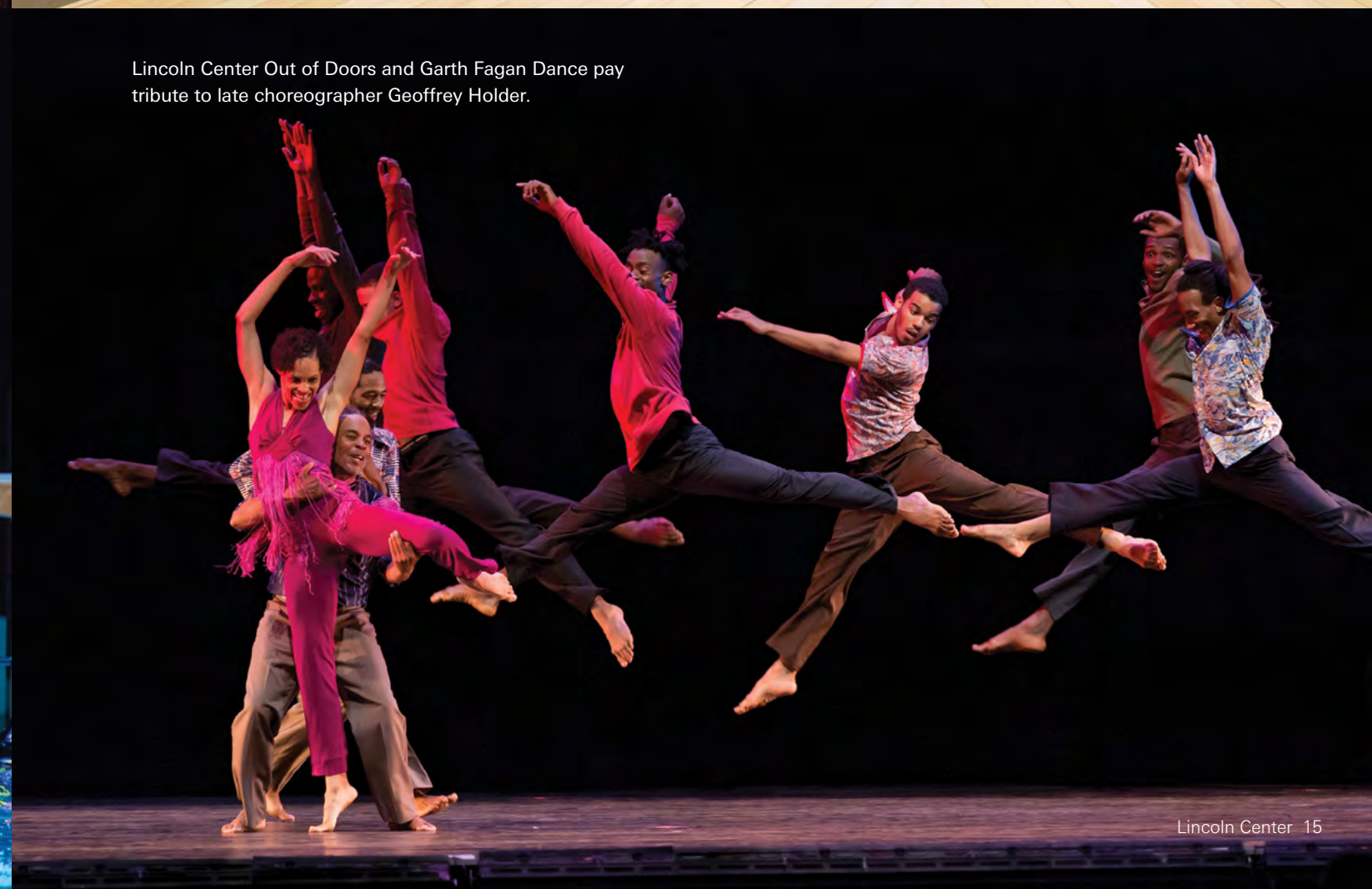
Billy Porter performs in The Appel Room as part of the American Songbook series.



The Berliner Philharmoniker's *St. Matthew Passion* was a highlight of 2014's White Light Festival.



The Lincoln Center Festival features works from around the world, including a modern *Miss Julie* starring Russia's Evgeny Mironov and Chulpan Khamatova.



Lincoln Center Out of Doors and Garth Fagan Dance pay tribute to late choreographer Geoffrey Holder.



Lincoln Center Education's *Up and Away* engages children on the autism spectrum in the arts, facilitating connection to their environment and inspiring self-expression.

## Educating...

Every child deserves access to the arts. Studies show that children who participate in the arts, both at school and with their families, are better at reading, math, and problem solving. They stand a better chance of staying in school, and they are more likely to participate in the arts as adults. Lincoln Center works with the city and the Department of Education to close gaps in arts education and give all students equal footing on their paths to success.





### Lincoln Center Education

**Lincoln Center Education (LCE)** supports academic settings with insufficient resources where arts education and teaching artists could make a world of difference. For example, the **Next Stage** series was developed to ease the transition that artists experience between formal training and the professional sphere. Next Stage brings artists like Jack O'Brien, Virginia Johnson, Aaron Flagg, and Brian Stokes Mitchell to talk about the role of arts education in their careers. In 2014/2015, LCE programs reached 26,000 students in 250 schools throughout NYC.

### Audition Boot Camp

The **Middle School Arts Audition Boot Camp** is a two-week training program, developed with the Department of Education, which serves rising eighth graders living at or below the poverty line. In August 2014, teaching artists helped these students prepare audition pieces and applications for competitive performing arts high schools. Of 98 tracked participants, 90% were accepted into first-choice schools. This summer, Boot Camp enrolled 149 students and kicked off alumni programming.

### Arts in the Middle

Studies indicate that 22% of NYC middle schools have little to no arts programming. In 2013, LCE partnered with the Department of Education to launch **Arts in the Middle**: a program that provides arts education and teacher training to middle schools for five years each. The first six schools showed research-backed success in engaging school administrators and encouraging parents to get more involved with their kids' schools. Eight middle schools have been selected to join the program in 2015. With this expansion, Arts in the Middle will be reaching 5,000 students, 300 educators, and 1,000 members of the community.

### Summer Forum

LCE has been offering summer workshops for artists and educators since 1975. Revamped as of 2014, the new **Summer Forum** invites arts educators, administrators, and practitioners at every level, from all over the world, to Lincoln Center for professional development. In July 2015, the Summer Forum expanded from 188 to 350 participants—a mix of returning alumni and new prospects. This year there were daily keynotes, roundtable panels, and receptions celebrating the 40th anniversary of Lincoln Center Education.



Middle School Arts Audition Boot Camp attendees meet with teaching artists to prepare high school audition pieces in dance, theater, visual art, and music (vocal and instrumental).



Lincoln Center Education's diverse programs educate learners of all ages, from all walks of life, with content designed to inspire a lifelong love of the arts.



Educators and administrators convene for three weeks of intensive workshops during Summer Forum, part of a tradition that started in 1976.



Lincoln Center President Jed Bernstein presented a conversation with Broadway's Brian Stokes Mitchell during the second season of Next Stage.



**mychickensoup** Hanging out at Lincoln Center...Can't complain! 🙄  
#nyc#ny#nycdimps#newyorkcity  
#newyorker#lincolncenter  
#chilling#juilliard



**super\_lola** New York Trip  
#fun #nyc #lincolncenter  
#publicplaza #Fall2015 #day1  
#love #appbreeze #tweegram  
#photooftheday #20likes



**rebekahmarine** Perfect day in NYC!!  
#NYC #lincolncenter #bioniconmodel  
#touchbionics #amputees



**peter\_barnes** Midsummer Night Swing #lcswing #lincolncenter #strictlyballroom #nyc #harlemrenaissanceorchestra



**mistermcqueen** Fun night at Midsummer Night Swing with my favorite dance partner 😊  
#midsummernightswing #take2 #duckface #mambo #LCswing



**ashleyisash** Wow! Seriously... how often does one ever get the opportunity to meet and hang for a bit with their favorite singer?



**frankcohn** #LincolnCenter #fountain #YouthAmbassadors #haiti2NYC #GlobalPotential @globalpotential



**geminiscorpio** Costume-ing with some of my favorite people.  
#lcfestival

# Faces of #LincolnCenter

Five million annual visitors make Lincoln Center a lively social space both on campus and online. Here are a few of the many memories they've shared with us in 2014–2015.



**djlevitown** Mostly Mozart closing night at Avery Fisher Hall  
#averyfisherhall #mostlymozart



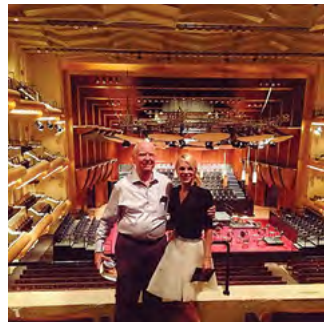
**thefinancialfashionista** HOT OUT HERE!!! AfroPunk Lincoln Center.



**cindy\_thrall** Had to re-post this. Sunday at Lincoln Center; Lyle Lovett and His Large Band put on a wonderful show! Thank you



**nycarra** @ The Lincoln Center South Plaza...#lincolncentersouthplaza #lincolncenterplaza #lincolncenter #summer2015 #newyorkcity #nofilter



**judith\_hoelscher** incredible evening in Lincoln Center! 🙄  
Concert "Mostly Mozart" with my Acting-Teacher. 🙄  
Absolutely amazing musicians!!!



**april8** nyc#lcswing #fan #lei #midsummernightswing #hawaiianstyle



**percboy1** #anniversary #MostlyMozart #clarinetpianorecital #beethoven #brahms #doggyloveskitty #funwithcat #lincolncenter



**deniseleads** Lincoln Center.



**jemmajums** My Hawaiian swing dance partner..bboy and Tahitian dancer..we got this! 🙄 #LCSwing



**boatashore** SUMMER Y'ALL// NY // #WatkinsFamilyHour #BobDylan #FionaApple #AimeeMann #ShawnColvin #LincolnCenter #LCOutOfDoors



**banhorn** Nora chilling by the fountain at #lincolncenter



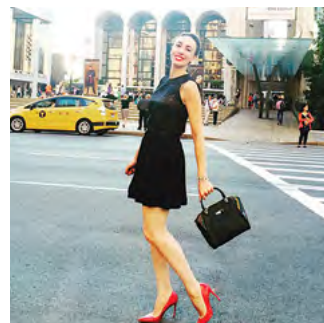
**starz723** My BFF Beverly & I at Mostly Mozart #averyfisherhall #LincolnCenter #music



**thelegantthrifter** Yep! Hanging with @samoutlaw at #LincolnCenter @SamOutlaw.



**deadlystingnyc** Frank + fountain = FIERCE #rhps #frankfurter #rockyhorror #nycrps #LCoutofdoors #rockyhorrorpictureshow



**ireyayrod** ❤️#Summeratlincolncenter #lovely #NewYork #NYC #summertime #LincolnCenter #blackdress #red



**castroesque**>>> Purple lighting at the #LincolnCenter @lincolncenter #LCOutOfDoors w #TheYy



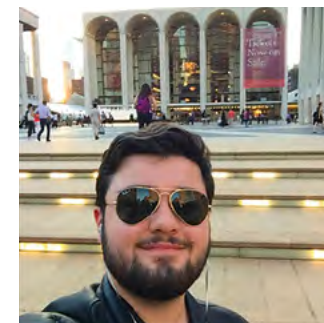
**cleveorch** in #nyc this week for 2 more #LCFestival shows @welsermoest found a license plate he likes!



**christeddy** We're ready for Vintage Trouble!! #lincolncenter #vintage-trouble #afropunklincolncenter #LCOutofdoors



**india\_carney** #tb to Lincoln Center, celebrating our siblings' graduation ceremony!



**mrjtea** Lincoln Center is my favorite place on earth ❤️❤️❤️

## World-Class Festivals and Performance Series



Kevin Vitarola

### Midsummer Night Swing

For a quarter of a century, New York's most popular social dance party has attracted thousands of people of all ages and skill levels for dancing under the stars. Renowned local, national, and international artists, from interdisciplinary musical backgrounds, fill Damrosch Park with exhilarating sounds.

*Lead support was provided by Macy's. Made possible in part by Janice Savin Williams and Christopher J. Williams/The Williams Capital Group, LP.*



Stephanie Berger

### Lincoln Center Festival

Lincoln Center Festival has received worldwide attention for presenting some of the broadest and most original programs of music, dance, opera, and theater. Since its inaugural season in 1996, the festival has presented artists from more than 50 countries, commissioned more than 42 new works, and staged over 142 New York, American, and world premieres.

*Lead support was provided by American Express. Major support was provided by The Andrew W. Mellon Foundation.*



Matt Dine

### Mostly Mozart Festival

America's first indoor summer music festival, Mostly Mozart has been a New York tradition and a tribute to the genius of Mozart for 49 years. Each season, Renée and Robert Belfer Music Director Louis Langrée and Ehrenkranz Artistic Director Jane Moss envision the festival as a broad exploration of its namesake and the composers he has influenced. A free Festival Orchestra concert welcomes all New Yorkers to celebrate the start of the season.

*Made possible by Sarah Billingham Solomon and Howard Solomon, and Rita E. and Gustave M. Hauser.*



Kevin Vitarola

### Lincoln Center Out of Doors

Scores of world-class music, dance, spoken word, and family events—including premieres, debuts, and annual programs like Roots of American Music, Heritage Sunday, and La Casita—make up the country's longest-running completely free outdoor festival, filling the plazas of Lincoln Center every August for 45 seasons.

*Lead support was provided by Bank of America.*



Kevin Vitarola

### Summer at Lincoln Center

Lincoln Center is overflowing with activities all summer long. Hundreds of thousands of visitors come to campus for performances on our many stages and plazas, including Damrosch Park and Hearst Plaza. From Midsummer Night Swing and Lincoln Center Festival to the Mostly Mozart Festival and the free concerts at Lincoln Center Out of Doors, summer at Lincoln Center offers something for everyone.

*Summer at Lincoln Center was supported by Diet Pepsi. Time Out New York was Media Partner of Summer at Lincoln Center. Artist Catering was provided by Zabar's and Zabars.com.*

## Initiatives and Engagement Program



Sean Carroll Photography

### Lincoln Center International

Lincoln Center International amplifies Lincoln Center's mission and reach worldwide. What began as a consulting practice has evolved into an institutional engine for philanthropic relationships, cultural exchange, and marketing partnerships with multinational corporations. It also extends the reach of Lincoln Center Education to new markets. In September 2015, Lincoln Center International launched the inaugural Lincoln Center Global Exchange to advance the centrality of art in our world.



Brian Stanton

### Lincoln Center Tours

Each year, guided tours departing from the David Rubenstein Atrium introduce thousands of visitors to Lincoln Center's historic past and vibrant present. Knowledgeable guides offer a unique overview of the famous resident organizations through a variety of tours that may include glimpses of a rehearsal in progress, delve into our campus's distinctive art and architecture, or explore our transformed public spaces. Foreign-language tours are available, as well as accommodations for visitors with disabilities.



Celia Fitzgerald

### Audience Development

Lincoln Center introduces new audiences to all kinds of performances through programs like the Young Patrons of Lincoln Center, created to engage like-minded young professionals with the arts. In addition, LCPA offers \$20 discount tickets to full-time students. We also offer a Veterans Initiative that provides significant opportunities and special social events for our nation's veterans.



Sean Carroll Photography

### Avery Fisher Artist Programs and Martin Segal Awards

Lincoln Center is dedicated to supporting the rising careers of performing artists by giving them much-needed recognition and financial support. The Avery Fisher Artist Program, which includes the Avery Fisher Prize and Career Grant, gives awards to outstanding instrumentalists. The Martin E. Segal Awards recognize young artists of outstanding achievement who are connected to our resident organizations, honoring the legacy of former Lincoln Center Chairman Marty Segal.



David Flores

### Lincoln Center Local

Lincoln Center now offers its year-round schedule of family-oriented performances and activities through LC Kids. This new program encourages caregivers and children to engage in artistic content together at Lincoln Center and throughout New York City. Membership is free to start out, with several flexible benefits packages available; it includes access to the Clark Studio Series, LC Kids Artists at the Atrium, LC Kids Storytime at the Atrium, and various special events throughout the year—including the first annual campus-wide Spring Fling in May 2015.



Christopher S. Clair

Lincoln Center Education (LCE) is the educational cornerstone of Lincoln Center for the Performing Arts. LCE enriches the lives of students, educators, and lifelong learners through opportunities for engagement with the highest-quality arts on the stage, in the classroom, online, and within the community. It offers unparalleled school and community partnerships, professional development workshops, consulting services, and its very own repertory. Over the span of four decades, LCE's work has reached more than 20 million students, educators at all levels, school administrators, parents, community members, teaching artists, and artists in New York City and around the world. Key LCE programs include:

### Lincoln Center Local

Under its mission "Lincoln Center in Your Neighborhood," Lincoln Center Local brings free performances to thousands of New York City residents in all five boroughs by forming community partnerships with libraries, schools, and arts organizations. A revolving collection of recent recordings from some of Lincoln Center's most celebrated live performances are screened in these local venues at no cost to audiences of all ages.

*Lincoln Center Local: Free Performances is made possible in part by Disney, United Airlines, and Resorts World Casino New York City. Major support for Lincoln Center Local: Free Screenings is provided by the Booth Ferris Foundation and the Altman Foundation.*



Richard Termine

### Great Performers

Since 1965, Great Performers has presented a season of premier artists in compelling performances of classical masterworks and cutting-edge repertoire. The beloved series includes the finest orchestras and conductors, virtuoso musicians, and special film presentations.

*BNY Mellon was the Lead Supporter of Great Performers. Endowment support for Symphonic Masters was provided by the Leon Levy Fund. Endowment support was also provided by UBS.*



Kevin Vitarola

### American Songbook

Showcasing composers and performers of American popular song in the spectacular Appel Room, the intimate Stanley H. Kaplan Penthouse, and the dynamic David Rubenstein Atrium, American Songbook celebrates today's brightest singing and songwriting artists in styles ranging from country to rock, bluegrass to jazz, and hip-hop to Broadway.

*Sponsored by Prudential Investment Management. Major support provided by Amy and Joseph Perella. Endowment support provided by Bank of America.*



Kevin Vitarola

### White Light Festival

Celebrating its fifth anniversary, the White Light Festival is Lincoln Center's annual exploration of music and art's power to reveal the many dimensions of our interior lives. International in scope, the multidisciplinary festival offers a broad spectrum of the world's leading instrumentalists, vocalists, ensembles, choreographers, dance companies, and directors—complemented by conversations with artists and scholars and post-performance White Light Lounges.

*White Light Festival was sponsored by Time Warner. Endowment support was provided by the American Express Cultural Preservation Fund.*



Kevin Vitarola

### Live From Lincoln Center

This groundbreaking television series, hosted by six-time Tony Award winner Audra McDonald, continued to expand its outreach by streaming telecasts online and on-demand to an ever-widening audience. Taking such world-class artists as cellist Yo-Yo Ma and Broadway's Patina Miller from Lincoln Center stages to homes in virtually every corner of the nation, *Live From Lincoln Center* is the recipient of 14 Emmy Awards and two Peabody Awards. The series just celebrated its 40th anniversary season.

*Live From Lincoln Center is made possible by a major grant from MetLife.*

*In addition to underwriting from MetLife, the series is also made possible with generous support from the Robert Wood Johnson 1962 Charitable Trust, Thomas H. Lee and Ann Tenenbaum, The Robert and Renée Belfer Family Foundation, and the National Endowment for the Arts.*



Ricki Vinassa

### Visual Arts

In addition to the performing arts on our stages, Lincoln Center is also committed to recognizing visual art and artists. Our campus is decorated with culturally significant artworks, inside our venues and throughout our plazas. We are also home to the Vera List Art Project, a highly regarded visual arts program that includes more than 220 works commissioned from leading contemporary artists.

*The presentation of John Gerrard's Solar Reserve was made possible by Jill and Peter Kraus, the Isambard Kingdom Brunel Society, Mr. and Mrs. J. Tomilson Hill III, Jane and Dan Och, and David Heller.*



Caitlin Murphy

### Accessibility at Lincoln Center

Working collaboratively with organizations across campus, Lincoln Center ensures that all of our visitors have access to the performing arts. Each year, the Passport to the Arts program serves hundreds of children with disabilities, and their families, by providing a supportive and welcoming experience. Verbal description campus tours, disability-related film screenings, and ASL-interpreted performances are just a few examples of our commitment to diversity and inclusion.

*Lincoln Center's Programs and Services for People with Disabilities is made possible in part by endowment support provided by AIG. Additional endowment support for Programs and Services for People with Visual Disabilities provided by Frederick P., Daniel and Elihu Rose—in Memory of Belle B. Rose.*



### David Rubenstein Atrium at Lincoln Center

The David Rubenstein Atrium has hosted over one million visitors since 2009. It's open to the public and offers free programs year-round. International artists perform each Thursday, and LC Kids Artists at the Atrium provides family-focused entertainment once a month on Saturdays. The JustFilms at AtriumFlix series and the Poet-Linc spoken word showcase are also free. The Atrium is home to LCTIX (a discount ticket program for events at Lincoln Center, New York City Center, Merkin Concert Hall, and Miller Theatre), a 'witchcraft cafe, a staffed information desk, and free Wi-Fi.

*Major support for the David Rubenstein Atrium at Lincoln Center is provided by Alice and David Rubenstein. Generous endowment support is provided by Stavros Niarchos Foundation and Oak Foundation. The Wall Street Journal is the Media Partner of the David Rubenstein Atrium.*

### Lincoln Center Digital

This initiative is devoted to extending Lincoln Center's mission through digital experiences. Activities include launching a new website, developing a mobile app, doubling the number of livestream events to reach a broader audience, engaging communities via social media, and using short standalone videos—such as our Emmy Award-winning *Mostly Mozart Minutes* (interviews with the Mostly Mozart Festival Orchestra)—to promote upcoming events and forge a stronger connection between artists and the audience. We are also enhancing our digital infrastructure to support the work of all Lincoln Center.

*Mobile apps and website supported by Bloomberg Philanthropies. Lead website technology provided by The Kovner Foundation. Additional support is provided by Katherine Farley and Jerry I. Speyer, William E. Ford, Nancy Peretsman, and Mr. and Mrs. Richard S. Braddock.*



Patrick McMullan Company 2014

### Location and Destination

Lincoln Center for the Performing Arts provides facility maintenance, parking, and cleaning services for the more than five million annual visitors and over 5,000 people who work, perform, and study on the 16-acre campus, which completed an award-winning \$1.2 billion renovation in 2012. Lincoln Center's campus is the setting for high-profile corporate and media events, film premieres, galas, graduation ceremonies, and numerous other programs.

*Operation of Lincoln Center's plazas and parks is supported in part with public funds provided by the City of New York.*

### Arts in the Middle

LCE works with the New York City Department of Education (DOE) to offer underserved middle schools long-term partnerships that integrate the arts into the school community, provide teachers with professional development, and improve the learning conditions of thousands of adolescents.

*Lincoln Center Education Arts in the Middle is made possible in part by The Pascualano Foundation, PepsiCo Foundation, the Pierre and Tana Matisse Foundation, LuEsther T. Mertz Charitable Trust and the Ford Foundation. Additional support is provided by the National Endowment for the Arts.*

### Lincoln Center Arts Teacher Award

LCE teams up annually with the New York City Department of Education's Big Apple Awards to honor an arts teacher for making a difference in students' lives. The Lincoln Center Arts Teacher Award includes \$5,000 to the award-winner for classroom use and is the only DOE-sponsored award recognizing excellence in the arts.

*Made possible by Ann and Thomas Unterberg.*

### LC Kids Artists at the Atrium

This series offers curated artistic programming for children of all ages at the David Rubenstein Atrium at Lincoln Center. It features live performances of dance, music, theater, and more, plus interactive units, artist talk-backs, and campus tours—all of which are incredibly popular with the tens of thousands of adults and children who are delighted at these sessions annually. LC Kids Artists at the Atrium runs on the first Saturday of every month.

*Major support is provided by Betty and John Levin. Endowment support is provided by The Walt Disney Company.*

### Lincoln Center Scholars Program

LC Scholars is a groundbreaking new initiative to train and place top-quality arts teachers in up to 120 New York City public schools. In partnership with Hunter College and the DOE, the program positions Lincoln Center as the first performing arts organization in the nation to work with a higher education institution in the creation of an alternative certification path for arts educators.

*Made possible by the Laurie M. Tisch Illumination Fund.*



Lincoln Center at the Movies screened San Francisco Ballet's *Romeo & Juliet* at 600 movie theaters nationwide as the first of four phenomenal companies contributing to *Great American Dance*.

# Connecting...

Technology is, without question, the single most influential tool for Lincoln Center to embrace as we pursue our goal of creating a worldwide arts community and expanding patrons' access both on and away from campus. In the past 12 months, our digital initiatives have advanced at a breathtaking pace—securing Lincoln Center's position as an arts organization of the future.





### Digital Initiatives

We recently launched a new website for all 11 resident organizations at [LincolnCenter.org](http://LincolnCenter.org). Today, the website is more attractive, intuitive, and user-friendly; you can easily learn about everything taking place on our campus, purchase tickets, and join membership groups. And it's mobile-friendly, so you can use either the website or our dedicated mobile apps to access all of our incredible arts content on-the-go. Lincoln Center also shares what's happening on campus through **livestreaming**, which allows anyone to go online and watch our shows as they're happening. That content is later available for repeat views through YouTube and LincolnCenter.org. In the first half of 2015, we livestreamed 25 events. By 2016, we'll be livestreaming 50 programs per year—up from 12 in 2014.

### Live From Lincoln Center

**Live From Lincoln Center** is one of Lincoln Center's most beloved programs. Since 1976, PBS has entertained hundreds of millions of viewers with content straight from our stages. Broadway's Audra McDonald hosts the series, which recently aired *Billy Porter: Broadway & Soul*, *Richard Tucker Opera Gala: A New Century*, and *Curtain Up: The School of American Ballet Workshop*. In September 2015, Lincoln Center won its 14th Emmy Award for *Sweeney Todd: The Demon Barber of Fleet Street*.

### Lincoln Center at the Movies

Inspired by The Metropolitan Opera's big-screen success with *Live in HD*, we launched **Lincoln Center at the Movies** this September. The premiere, *Great American Dance*, featured four of the nation's top dance companies: New York City Ballet, Ballet Hispanico, Alvin Ailey American Dance Theater, and the San Francisco Ballet. Lincoln Center worked with each company to capture footage of live performances; the results will be screened at 600 movie theaters nationwide through Fathom Events. Next year it will reach an additional 600 cinemas internationally. This material will ultimately be available as educational content for K-12.

### Lincoln Center International

**Lincoln Center International** leverages Lincoln Center's 50-plus years of experience to help others plan, build, and operate performing arts centers worldwide. It works with **Lincoln Center Education** to share the arts-based learning techniques pioneered here and launched **Lincoln Center University** to train tomorrow's arts managers.

### Lincoln Center Global Exchange

On September 18, 2015, Lincoln Center hosted its inaugural **Lincoln Center Global Exchange**. The conference brought together 250 international thought leaders from business, government, education, media, science, and entertainment to discuss how art and culture can be even more effective in fostering healthy citizens and strong communities worldwide. Alphabet Inc. Executive Chairman Eric Schmidt gave a keynote address on the role of human creativity in our digital future. The event concluded with a spectacular evening performance orchestrated by Artistic Curator Sir Jonathan Mills.

Lincoln Center recently launched a free mobile app that tells patrons about everything taking place on campus and allows them to easily purchase tickets on-the-go; new features continue to roll out.





In 2015, *Live From Lincoln Center's Sweeney Todd: The Demon Barber of Fleet Street* won a Primetime Emmy as an Outstanding Special Class Program, making it Lincoln Center's 14th Emmy Award.



Kana Kimura performs *The Calling*, by Jessica Lang Dance, during the spectacular evening performance that concluded the Lincoln Center Global Exchange.

The First Lady of China, Madame Peng Liyuan, visited Lincoln Center in September 2015 for a reception at the Metropolitan Opera. Joined by Lincoln Center Chairman Katherine Farley, the revered soprano commemorated her 2004 performance of *Mulan Psalm* at Lincoln Center's Alice Tully Hall.



Crystal Valentine, New York City's Youth Poet Laureate, delivered a poignant spoken word performance to 250 international leaders during the Lincoln Center Global Exchange.



# Thank you



The stirring images throughout this book mirror the world-class programming and exceptional events made possible by your charitable gifts. Philanthropic support from you—along with public funding from key civic leaders, bequests, and in-kind contributions—is essential to fulfilling our mission.

We are especially thankful for the support we received this year from the many generous individuals, corporations, foundations, and government agencies recognized on the following pages. It is their generous assistance that allows us to present the diverse range of exceptional performances available on Lincoln Center's stages and beyond.

## Thank you for your support.

Not yet part of the Lincoln Center family of contributors? There are many ways to play a role in the world's leading performing arts center, from becoming a Friend of Lincoln Center to offering pro bono services or helping us send teaching artists to local schools. Please consider this a personal invitation to be one of Lincoln Center's indispensable advocates and join our inspirational family of support.

For more information on making a gift or donating services to Lincoln Center, please contact Tamar Podell, Executive Vice President of Planning and Development, at 212.875.5421 or [tpodell@lincolncenter.org](mailto:tpodell@lincolncenter.org).

Students celebrate their accomplishments at the Middle School Arts Audition Boot Camp.

## Lincoln Center Transformation Bravo Campaign Donors

### LEADER

**\$20,000,000 and above**

- The City of New York
- The State of New York
- United States Department of Transportation
- Michael R. Bloomberg
- Bruce and Suzie Kovner
- Ronald P. Stanton
- The Starr Foundation

### BENEFACTOR

**\$15,000,000 and above**

- Ford Foundation
- Leon and Norma Hess
- Hess Corporation
- Alice and David Rubenstein
- The Alice Tully Foundation

### PATRON

**\$10,000,000 and above**

- Adrienne Arsht
- Katherine G. Farley and The Speyer Family Foundation
- The Hearst Foundations and Hearst Corporation
- David H. Koch
- Stephen M. Ross
- Laurie M. Tisch Illumination Fund
- Ann Ziff

### PARTNER

**\$5,000,000 and above**

- Ronnie and Lawrence D. Ackman
- Christina and Robert Baker
- Robert and Renée Belfer Family Foundation
- Steffi and Robert Berne
- Blavatnik Family Foundation
- The Carson Family Charitable Trust
- Citi Foundation
- Susan and David Coulter
- Ellen and Daniel Crown
- James G. Dinan and Elizabeth R. Miller
- Anne and Joel Ehrenkranz
- Bill Ford

- Meg and Bennett Goodman
- Mimi and Peter Haas Fund
- The Hauser Foundation
- Elliot and Roslyn Jaffe Family
- Sheryl and Chip Kaye
- Betty and John Levin
- Mr. and Mrs. Peter L. Malkin
- The Andrew W. Mellon Foundation
- Cheryl and Philip Milstein
- Morgan Stanley
- Oak Foundation
- Jane and Daniel Och
- Ralph Lauren Corporation
- Ingeborg and Ira Leon Rennert
- Josie and Julian Robertson
- Ralph Schlosstein and Jane Hartley
- Tandon Family Foundation
- John A. Thain
- Joe and Clara Tsai

### FRIEND

**\$3,000,000 and above**

- Hugh Trumbull Adams
- BNY Mellon
- Bank of America
- Barclays
- Frances and Benjamin Benenson Foundation
- Credit Suisse
- The Walt Disney Company
- Cheryl and Blair Effron
- Gertrude and Louis Feil and Family
- Jerome L. Greene Foundation
- J.P. Morgan
- William R. Kenan, Jr. Charitable Trust
- Leon Levy Foundation
- Stavros Niarchos Foundation
- Anna Nikolayevsky
- Omnicom Group Inc.
- Charles H. Revson Foundation, Inc.
- The Peter Jay Sharp Foundation
- The Donald and Barbara Zucker Family Foundation
- Anonymous (1)

### SUPPORTER

**\$1,000,000 and above**

- American Express
- Mercedes T. Bass
- Mary Lake and Frank A. Bennack, Jr.
- Mr. and Mrs. James A. Block
- Richard and Susan Braddock
- Charina Endowment Fund / Horace W. Goldsmith Foundation
- The Chen Family
- Deutsche Bank
- Dr. Marjorie and Roy Furman
- Goldman, Sachs & Co.
- Roberta and Harvey Golub
- The Audrey and Martin Gruss Foundation
- Margaret and William R. Hearst III
- Cecilia and Jim Herbert
- The Kraus Family Foundation
- The Marie-Josée and Henry R. Kravis Foundation
- Mr. and Mrs. Leonard Lauder and The Estee Lauder Companies Inc.
- Thomas H. Lee and Ann Tenenbaum
- McKinsey & Company
- Macy's Foundation
- Nancy Abeles Marks
- Sir Deryck and Lady Va Maughan
- The Ambrose Monell Foundation
- Edward John Noble Foundation, Inc.
- Lynne and Richard Pasculano
- PepsiCo Foundation
- Amy and Joseph Perella
- David Rockefeller
- Susan and Jon W. Rotenstreich
- The Fan Fox and Leslie R. Samuels Foundation, Inc.
- Daisy and Paul Soros
- Joan H. Tisch
- Lizzie and Jonathan Tisch
- Bruce and Robbi Toll
- Turner Construction Company
- UBS
- Ann and Thomas Unterberg
- Verizon Foundation
- Mildred and George Weissman

# Lincoln Center Transformation Bravo Campaign Donors

## CONTRIBUTOR

### \$500,000 and above

Altria Group, Inc.  
Booth Ferris Foundation  
KPMG LLP  
Leni and Peter May  
Pfizer  
Nicki and Harold Tanner

## SPONSOR

### \$100,000 and above

The Achelis Foundation  
Altman Foundation  
The Bodman Foundation  
Chris and Bruce Crawford  
Jennie L. and Richard K. DeScherer  
Essner Family Foundation  
Ernst & Young LLP  
Barry S. Friedberg and Charlotte Moss  
Bart Friedman and Wendy A. Stein  
Efraim Grinberg  
David and Alice Hunt Family Foundation  
Frayda and George Lindemann  
Leonard Litwin  
Raymond J. McGuire  
Mitsui USA  
William C. and Susan F. Morris  
The Morse Family Foundation  
Movado  
The New York Community Trust  
The Rebell Family  
Thomas and Elizabeth Renyi  
Rockefeller Brothers Fund  
Mrs. Frederick P. Rose  
Karen and Gary Rose  
Edith and Martin E. Segal  
Heidi and Stefan Selig  
Mr. and Mrs. Howard Solomon  
Ambassador Carl Spielvogel and  
Barbaralee Diamonstein  
Wachovia Foundation  
John C. Whitehead  
Janice Savin Williams and  
Christopher J. Williams  
The Williams Capital Group, L.P.  
Anonymous (2)

## SUSTAINER

### Up to \$99,999

Norma Asnes  
Susan Baker and Michael Lynch  
John B. Beinecke  
Carolyn and Laurence Belfer  
Elizabeth Belfer  
Mr. and Mrs. Albert C. Bellas  
Sol and Margaret Berger Foundation  
Laura and Lloyd Blankfein  
Cashin Family Fund  
Diane M. Coffey  
The Nathan Cummings Foundation  
Jean S. and Richard E. Deems  
Peter Frelinghuysen  
Mr. and Mrs. Patrick A. Gerschel  
Louis V. Gerstner  
Frances Glick  
Perry and Marty Granoff Family Foundation  
Eugene and Emily Grant  
Paul and Diane Guenther  
Gurnee F. Hart  
Ruth Houghton  
Landmark West!  
Nancy and Jeffrey Lane  
Nathan Leventhal  
Elizabeth Cooke and Reynold Levy  
Bertha and Isaac Liberman Foundation  
The Fay J. Lindner Foundation  
Phyllis and William Mack  
John B. Madden  
Shelly and Tony Malkin  
William F. May  
Cheryl and Michael Minikes  
Monterey Fund, Inc.  
Martin J. Oppenheimer  
Mr. and Mrs. Stephen Osman  
Louise and Lake Polan  
Mrs. Lisa Schiff  
Roberta and Irwin Schneiderman  
Esther Simon Charitable Trust  
The John R. and Inge P. Stafford Foundation  
Strong Foundation of New York  
Julien J. Studley  
Time Equities, Inc.  
Alair A. Townsend

# Annual Supporters

## \$1,000,000 and over

Jody and John Arnhold  
Bloomberg Philanthropies  
Sherman Fairchild Foundation  
Frank A. Bennack, Jr./Steven R. Swartz/  
Hearst  
Somesh Khanna and McKinsey &  
Company  
The Kovner Foundation  
MetLife and MetLife Foundation  
Oak Foundation  
Alice and David M. Rubenstein  
Sarah Billingham Solomon and  
Howard Solomon  
The Laurie M. Tisch Illumination Fund

## \$500,000–\$999,999

Katherine Farley and Jerry I. Speyer  
The Howard Gilman Foundation  
Jim Herbert/First Republic Bank  
Robert Wood Johnson 1962  
Charitable Trust  
Lincoln Center Corporate Fund  
Skadden, Arps, Slate, Meagher & Flom LLP  
Steinway & Sons

## \$250,000–\$499,999

Mr. and Mrs. Lawrence D. Ackman  
American Express  
Adrienne Arsht  
Christina and Robert C. Baker  
Bank of America/ U.S. Trust  
Bank of China  
Renée and Robert Belfer  
Mary Lake Polan and Frank A. Bennack, Jr.  
Steffi and Robert Berne  
BNY Mellon  
Judy and Russ Carson  
Guoqing Chen  
Susan and David Coulter  
Ellen and Daniel Crown  
James G. Dinan and Elizabeth R. Miller  
The Walt Disney Company  
Cheryl and Blair Effron  
Anne and Joel Ehrenkranz  
Fosun Foundation  
Meg and Bennett Goodman  
Mimi Haas  
Hakluyt & Company  
Ralph Schlosstein and Jane Hartley  
Rita E. and Gustave M. Hauser  
The Hauser Foundation

Mr. and Mrs. John B. Hess  
Elliot and Roslyn Jaffe  
Chip and Sheryl Kaye  
Julia and David H. Koch  
Bruce and Suzie Kovner  
Jill and Peter Kraus  
Marie-Josée and Henry Kravis  
Thomas H. Lee and Ann Tenenbaum  
Betty and John Levin  
Mr. Bryan Lourd  
Sir Deryck and Lady Va Maughan  
Cheryl and Philip Milstein  
Morgan Stanley  
Movado  
Anna Nikolayevsky  
Jane and Daniel Och  
Omnicom Group Inc.  
PepsiCo Foundation  
Amy and Joseph Perella  
Prudential Investment Management  
Ingeborg and Ira Leon Rennett  
Kara and Stephen M. Ross  
Susan and Jack Rudin  
Phyllis and Ivan Seidenberg  
John A. Thain  
Joe and Clara Tsai  
Ann and Thomas Unterberg  
Ann Ziff  
Anonymous

## \$100,000–\$249,999

Barbara and James Block  
Booth Ferris Foundation  
Richard and Susan Braddock  
Eric Brauer  
Cahill Gordon & Reindel LLP  
Bill Campbell  
Carnegie Corporation of New York  
Charina Endowment Fund  
Covington & Burling LLP  
Deutsche Bank  
Jane and Bill Donaldson  
Lee & Jeffrey Feil  
William E. Ford  
Ford Foundation  
Dr. Marjorie & Roy Furman  
Lise Strickler and Mark Gallogly  
The Florence Gould Foundation  
Maurice R. Greenberg, The Starr  
Foundation  
The Audrey and Martin Gruss Foundation

JetBlue  
Kauff McGuire & Margolis LLP  
Peter and Mary Kalikow  
John S. and James L. Knight Foundation  
The Litwin Foundation  
Macy's  
Mr. and Mrs. Peter L. Malkin  
Nancy Abeles Marks  
The Pierre and Tana Matisse Foundation  
The Andrew W. Mellon Foundation  
LuEsther T. Mertz Charitable Trust  
Mitsui & Co. (U.S.A.), Inc.  
The New York Community Trust  
Nora and James Orphanides/Orphanides  
& Associates LLC  
The Pasculano Foundation  
Julian Robertson  
Rockefeller Brothers Fund  
Erica and Eric Schwartz  
The Scully Peretsman Foundation  
The Shubert Foundation  
Marilyn and Jim Simons  
Daisy M. Soros  
Tina and Steven Swartz  
Target  
Virginia B. Toulmin Foundation  
United Airlines  
Venable LLP/Peter S. Britell  
Nancy and George Walker  
The Wall Street Journal  
Nina W. Werblow Charitable Trust  
William Hill Estate Winery  
Janice Savin Williams and  
Christopher J. Williams  
Willkie Farr & Gallagher LLP  
Judith and Stanley Zabar  
The Trust Under the Will of  
Roberta L. Zuhlke

## \$50,000–\$99,999

The Achelis Foundation  
Robert J. Alexander/CBRE  
Altman Foundation  
Robert and Helen Appel  
Douglas Band  
Alain Belda  
Jessica M. Bibliowicz  
Cathleen P. Black  
Jeff Blau  
Tom and Meredith Brokaw  
Dr. Martin Bussmann  
CBS Corporation  
Carter Ledyard & Milburn LLP  
Stuart H. Coleman  
Connell Foley LLP  
Joan Ganz Cooney and Peter G. Peterson

## Annual Supporters

Chris and Bruce Crawford  
Beth and Ravenel Curry  
The Philippe and Deborah Dauman Family Foundation  
Jennie L. and Richard K. DeScherer  
Ana Maria Diniz  
Dunard Fund USA  
Evelyn H. Lauder Charitable Trust  
Emily and Harold Ford, Jr.  
Bart Friedman and Wendy A. Stein  
Catherine A. Gellert  
General Atlantic  
Gibson, Dunn & Crutcher LLP  
Roberta and Harvey Golub  
Nizan Guanaes/Grupo ABC  
Agnes Gund  
Anne and Bill Harrison  
David B. Heller and Hermine Riegerl Heller  
Cecilia and Jim Herbert  
Claudia Madrazo and Roberto Hernández  
Marlene Hess and James D. Zirin  
Mr. and Mrs. J. Tomilson Hill  
Inter-American Development Bank  
The Isambard Kingdom Brunel Society  
Ms. Andrea Jung  
The Katzenberger Foundation, Inc.  
KPMG LLP  
Yang Lan  
Shelly and George Lazarus  
Mrs. Jane Lombard  
LVMH Moët Hennessy Louis Vuitton Inc.  
The Christy and John Mack Foundation  
Howard Marks  
Paula & Tom McInerney  
Anne Welsh McNulty  
The Ambrose Monell Foundation  
Amanda and Neal Moszkowski  
Renata Nascimento  
New York-Presbyterian Hospital  
Paul Hastings LLP  
Yana Peel  
Ronald O. Perelman  
Diana and Joel C. Peterson  
Ralph Lauren Corporation  
Maria Catalina Saieh  
The Fan Fox and Leslie R. Samuels Foundation, Inc.  
Sonia Sarmiento  
The Honorable Colleen McMahon and Frank V. Sica  
Sidley Austin LLP  
The Harold & Mimi Steinberg Charitable Trust  
Time Warner Inc.  
WABC-TV  
Barbara Walters  
Weil, Gotshal & Manges LLP  
Zabar's and Zabars.com  
Anonymous

### \$25,000–\$49,999

Noreen Ahmad  
Ardent Health Services  
Ariel Investments LLC  
Keith and Debbie Banks  
Timothy and Michele Barakett  
Barclay Damon, LLP  
M. Beverly and Robert G. Bartner  
Anne H. Bass  
Mercedes T. Bass  
Ginette and Joshua Becker

Mr. and Mrs. Fred C. Benenson  
Georgette Bennett and Leonard S. Polonsky  
Jed Bernstein  
Debra and Leon Black  
Tina and Jeffrey Bolton  
Shirley Brodsky  
The Clarissa & Edgar Bronfman Jr. Foundation  
The Brown Foundation, Inc., of Houston  
Ms. Angela Chao  
Simona and Jerome A. Chazen  
Margaret Hess Chi and Michael Y. Chi  
Columbia University Medical Center  
Constans Culver Foundation  
Judith-Ann Corrente  
Cushman & Wakefield  
Dalio Foundation  
Davis Polk & Wardwell  
Marie and Charles DeBenedittis  
Aashish and Dinny Devitre  
Mrs. Junia Doan  
Doris Duke Charitable Foundation  
Jane & Robert Draizen  
DreamWorks Animation  
Bob and Anne Essner  
Fenglei and Suning Fang  
Janet and Mike Fourtqc  
Marilyn and Lawrence Friedland  
Jeff Gates and Mike Moran  
Michael and Mary Gellert  
Ann and Gordon Getty Foundation  
Arlene and Robert M. Goldberg and The Fay J. Lindner Foundation  
The Horace W. Goldsmith Foundation  
The Grand Marnier Foundation  
Stanley and Nancy Grossman  
Ronald G. & Nancy A. Harrington  
James Hexter  
Interpublic Group  
Florence and Robert Kaufman  
Kramer Levin Naftalis & Frankel, LLP  
Chris and Renee Liddell  
George Lucas Family Foundation  
Phyllis Mailman  
Leni and Peter May  
The John P. and Anne Welsh McNulty Foundation  
Julie and Edward J. Minskoff  
Jenny and Rowland Moriarty  
Mutual of America  
Arts Foundation of North Rhine-Westphalia  
James and Melissa O'Shaughnessy  
Patina Restaurant Group  
Paul Weiss Rifkind Wharton & Garrison LLP  
PJ Clarke's  
Cynthia H. Polsky and Leon B. Polsky  
Steven Rattner and Maureen White  
Thomas & Elizabeth Renyi  
Restaurant Associates  
R. Bruce and Melissa Rich  
Blanchette Hooker Rockefeller Fund  
Mrs. Frederick P. Rose  
Janet and Marvin Rosen  
Jim and Kayley Rosenthal  
May and Samuel Rudin Family Foundation, Inc.  
Scripps Networks Interactive  
Select Medical  
Mr. & Mrs. Larry A. Silverstein  
Robert and Gillian Steel  
The Jay and Kelly Sugarman Foundation  
Tandon Family Foundation

Frank & Cherry Tang  
Telegraph Hill Partners  
Barbara and Donald Tober  
Toyota  
Turner Construction Company  
Esme Usdan and James Snyder  
Sandra and Stan Warshawsky  
Jody Wolfe  
Nora G. Wu  
Leslie and Daniel Ziff  
Tara E. Kelleher and Roy J. Zuckerberg  
Anonymous (6)

### \$10,000–\$24,999

Accel Partners  
Akin, Gump, Strauss, Hauer & Feld  
Judith Hart Angelo and John M. Angelo  
Joan and Robert Arnow Fund  
ASCAP  
Rose M. Badgeley Charitable Trust  
Barclays  
The Barker Welfare Foundation  
Kenneth Baron  
Theodore H. Barth Foundation  
Anson and Debra Beard, Jr.  
Scott and Erica Belsky  
Dr. & Mrs. Alan S. Berkeley  
Roger and Brook Berlind  
Parnassus Foundation/Jane and Raphael Bernstein  
BIG - Bjarke Ingels Group  
Boston Consulting Group  
Jill Braufman and Dan Nir  
Daniel and Estrellita Brodsky  
Bryan Cave LLP  
Burger Collection, Hong Kong  
The Ralph M. Cestone Foundation  
Citi  
The City University of New York  
Jill & Irwin B. Cohen  
Joseph M. Cohen  
The Steven A and Alexandra M. Cohen Foundation  
Lisa Pevaroff-Cohn and Gary Cohn  
Mrs. Daniel Cowin  
DLA Piper  
Davis & Gilbert  
Diller Scofidio + Renfro  
Catherine Cantrell and Joseph Dionne  
Doris Duke Foundation for Islamic Art  
The Max and Victoria Dreyfus Foundation, Inc.  
Glenn and Eva Dubin  
Mary Ellen Dundon  
Andy Dunn  
The Elkes Foundation  
Tony and Judy Evnin  
Hilary Feshbach  
Barbara J. Fife  
Marilyn and Sheldon Fireman  
Margaret and Howard Fluhr  
The G & A Foundation, Inc.  
Laurence T. Ginsberg  
Liane Ginsberg  
Cynthia Crossen and James Gleick  
Goethe-Institut  
Goetz Fitzpatrick LLP  
Ilene Gotts / Wachtell Lipton  
Mr. and Mrs. Barry W. Gray  
Tish and Michael Guptan  
Nancy Lippman Halis and Jeffrey Halis

The Harkness Foundation for Dance  
Francena T. Harrison Foundation Trust  
Michael and Patricia Heaney  
The DuBose and Dorothy Heyward Memorial Fund  
Sarah and Elie Hirschfeld  
Sandra Horbach and Steven Skoler  
Caroline and Ed Hyman  
Jill and Ken Iscol  
ITOCHU International Inc.  
Kathy & Mitchell Jacobson  
Japanese Chamber of Commerce and Industry of New York, Inc.  
The Joelson Foundation  
Charles and Ann Johnson  
Barbara and Donald Jonas  
Jones Day  
Gary Kaminsky  
Ann F. Kaplan  
The Honorable Judith S. Kaye  
Anna-Maria and Stephen Kellen Foundation  
Wendy Keys  
Ms. Kaori Kitao  
A. Eugene and Barbara Kohn  
Abby F. Kohnstamm  
Gwen S. Korovin, M.D.  
C.L.C. Kramer Foundation, Inc.  
Mr. and Mrs. Kenneth G. Langone  
The Ronald and Jo Carole Lauder Foundation  
Karen and Paul Levy  
Leon Levy Foundation  
Elizabeth A. Cooke and Reynold Levy  
Evelyn Gruss Lipper and William T. Speck  
Arthur L. Loeb  
Audrey Love Charitable Foundation  
The Honorable and Mrs. Earle I. Mack  
D. Scott Mackesy/Welsh, Carson, Anderson & Stowe  
The Mailman Foundation, Inc.  
Marubeni America Corporation  
Maveron LLC  
MBAF  
MCR Development LLC  
Richard and Ronay Menschel  
Mid Atlantic Arts Foundation  
Linda Mirels, Wendy Fisher and Philip Kirsh  
Mitsubishi Corporation (Americas)  
Dr. and Mrs. Paul M. Montrone  
William C. and Susan F. Morris  
Dinny and Lester Morse  
Wendy and Bruce Mosler  
Thomas S. Murphy  
Nash Family Foundation  
Linda and Stuart Nelson  
New England Foundation for the Arts  
The New York Times Company  
Susan and Donald Newhouse  
The Samuel I. Newhouse Foundation  
David and Melanie Niemiec  
Nippon Express USA, Inc.  
Nixon Peabody LLP  
John H. and Ethel G. Noble Charitable Trust  
Indra and Raj Nooyi  
Oliver Wyman  
Martin and Suzi Oppenheimer  
Lida Orzeck, Ph.D.  
Party Rental Ltd.  
Andrew M. Paul/Enhanced Equity Fund  
Laura Pels International Foundation for Theater

Carole Pittelman  
Joan and Robert Rechnitz  
Resorts World Casino New York City  
Richenthal Foundation  
Mr. David Rockefeller  
Jeannette and Jonathan Rosen  
RR Donnelley  
Fiona and Eric Rudin  
Arthur Samberg  
Lisa and David T. Schiff  
Donna and Marvin Schwartz  
Dr. and Mrs. Thomas P. Sculco  
John M. Shapiro  
Sharp Fund PLD at The New York Community Trust  
Walter & Judy Shipley  
Esther Simon Charitable Trust  
SolarReserve  
Gillian Sorensen  
Jay and Deanie Stein  
Sumitomo Corporation of Americas  
The Taft Foundation  
Tamsen Z  
Nicki and Harold Tanner  
Ann and Andrew Tisch  
Lizzie and Jonathan Tisch  
Bruce and Robbi Toll  
Alair A. Townsend  
Trust for Mutual Understanding  
Kara Unterberg  
Viacom, Inc.  
Andrea and Paul Vizcarrondo  
John and Barbara Vogelstein  
Daria L. & Eric J. Wallach  
Lulu and Anthony Wang  
The Isak and Rose Weinman Foundation, Inc.  
Wildes & Weinberg, P.C.  
Beth Wilkinson and David Gregory  
Uri Zilkha, City Protection, Inc.  
Ariel and Adam Zurofsky  
Anonymous (7)

### \$5,000–\$9,999

Patricia and Alan B. Abramson  
AKF Group LLC  
Akustiks, LLC  
Linda and Earle Altman  
Ammann & Whitney  
Eleanor S. Applewhaite  
Loreen Arbus  
Marty and David G. Arscott  
Mr. and Mrs. George Asch  
Beesley Family Foundation  
Lincoln and Patricia Benet  
Judy and Howard Berkowitz  
Jonathan and Caryn Bilzin  
Peter and Heather Boneparth  
Rhoda Bressler  
Rita and Charles Bronfman  
Elizabeth A.R. and Ralph S. Brown, Jr.  
Noreen and Kenneth Buckfire  
Mr. and Mrs. Robert L. Burch, III  
Ann L. and Lawrence B. Buttenwieser  
Cambridge Corporate Services - John Dockery  
Tracia Luh and Paul Carpenter  
John K. Castle  
Melinda and Tony Cheng  
John and Kristin Clark  
Diane M. Coffey  
Barbara and H. Rodgin Cohen

Betsy Cohn  
Sean Coleman  
Colgate-Palmolive Company  
The Frederick R. Coudert Foundation  
Douglas S. Cramer and Hubert S. Bush  
Joshua Dachs/Fisher Dachs Associates  
Lucy and Mike Danziger  
Antoinette Delruelle and Joshua L. Steiner  
Barbara and Eric Dobkin  
James M. Dow and Lucille R. Zanghi  
Mary and Kenneth Edlow  
Mark Edwards, AIM Altitude  
Carol and Roger Einiger  
Margot and John Ernst  
The Ettinger Foundation  
Peter and Joan Faber  
Fiona Morgan Fein  
Barbara and Meyer Feldberg  
William B. Finneran  
Bill Fischer  
Candia Fisher and Allen L. Stevens  
Charlotte Moss and Barry Friedberg  
Jill Furman  
Judie and Howard Ganek  
Alice and Nathan Gantcher  
Judith A. Garson and Steven N. Rappaport  
The Giants Foundation  
Ben Gilmartin and Tabitha Decker  
Betsy and Davidson Goldin  
Joe & Courtney Goldsmith  
Lisa & Sandy Gottesman  
Dr. and Mrs. Victor Grann  
The Grodzins Fund  
Diane and Paul Guenther  
Jill Handelsman Foundation  
Gail and Walter Harris  
The Jim Henson Foundation  
Joyce Hergenhan  
Mrs. Ronnie F. Heyman  
H&H Charitable Trust  
Bonnie and Harold Himmelman  
Holly Andersen & Douglas Hirsch  
Daniel Clay Houghton  
Glenn and Constance Hubbard  
Carl Jacobs Foundation  
JLL  
KBW  
Rich Kendrick  
Stuart and Isabel Kessler  
Sydney and Rob Kindler  
Walter C. Klein Foundation  
Emila Saint-Amand Krimendahl  
Sheila C. Labrecque  
Henna H. Ong and Peter D. Lawrence  
Kate Lear and Jon LaPook  
Dalia and Larry Leeds  
Jonathan E. Lehman  
Long Island Community Foundation / James D. Brown Jr. Fund  
Huixing (Catherine) Lu  
Richard H.M. and Gail Lowe Maidman  
Susan and Morris Mark  
Judith and David Marrus  
Sylvia and Leonard Marx, Jr.  
Maverick Capital Charities  
Anthony D. McCann  
Sanjeev Mehra/GS Gives  
Joyce F. Menschel  
Robert Menschel and Janet Wallach  
Sharon Metrick Memorial Fund

## Annual Supporters

Mr. Joshua M. Milstein  
Mitsubishi Heavy Industries America, Inc.  
Kammy Moalemzadeh  
Surya and Valli Mohapatra  
Mr. and Mrs. Kenneth F. Mountcastle  
Donald R. Mullen, Jr.  
Needham Foundation Trust  
Brooke and Daniel Neidich  
The New York State Presenters Network  
Stanley Newman and Dr. Brian Rosenthal  
Bernard Nussbaum and Nancy Kuhn  
Nancy and Morris W. Offit  
Robert and Marion Oster  
Pamela and Edward Pantzer  
Susan and Alan Patricof  
Liz and Jeff Peek  
Abraham Perlman Foundation  
Dina and George Perry  
Peter Brown & Associates  
Scott Peters/Joseph Sanborn  
Marnie S. Pillsbury  
Rajika and Anupam Puri  
The Tony Randall Theatrical Fund  
John Raphael  
Jon and Mary Rather  
RCDolner LLC  
Susan and Arthur Rebell  
Paula and Ira M. Resnick  
Russ and Ann Rhoades  
Frank E. Richardson  
The Frederick W. Richmond Foundation  
Mrs. Elizabeth Rohatyn  
Andrew and Fabiola Rolfe  
The Benjamin M. Rosen Family Foundation  
Anita S. Rosenbloom / Stroock & Stroock & Lavan LLP  
Alexandra Munroe & Robert Rosenkranz,  
The Rosenkranz Foundation  
The Edward John and Patricia Rosenwald  
Foundation  
Laura and Jim Ross  
Susan and Jon Rotenstreich  
Deborah and Chuck Royce  
William H. Mandel & Robert L. Russell  
Richard E. Salomon  
Pam and Scott Schaffer  
Janine Gordon and Alvin Schechter  
Livia & Leo Schenker  
Sarah I. Schieffelin Charitable Trust  
Roberta Schneiderman  
Jordan B. Seaman  
Fred and Robin Seegal  
The Segal Company  
Anna Marie and Robert F. Shapiro  
Alexandra Shiva and Jonathan Marc Sherman  
Greg S. Feldman and Melanie Shorin  
Silicon Valley Community Foundation  
Adrienne and William Silver  
Mr. and Mrs. Thomas W. Smith  
Jeff Soref and Paul Lombardi  
Larry and Lauren Sorrel  
John Sparling, London Fischer LLP  
Nancy and Burton Staniar  
Ronald P. Stanton  
Ruth S. Stanton  
Elizabeth and Neil Stein  
Joan and Michael Steinberg  
Nancy and Mitchell Steir  
Maryann Sudo Baxter in honor of Tracia Luh  
Lynne Tarnopol  
Marc Tessier-Lavigne and Mary Hynes

Michelle Toll and William O’Flanagan  
Veronis Suhler Stevenson  
Mary J. Wallach  
The Weinger Foundation, Inc.  
Janine Feng & Oliver Weisberg  
Mr. and Mrs. James O. Welch, Jr.  
Williams Lea  
Elaine and Jim Wolfensohn  
Gary Wunderlich  
Barbara and David Zalaznick  
W. Kevin Zhu  
Audrey Y. Zucker  
Anonymous (6)

### \$2,500–\$4,999

ABM Industries, Inc.  
Audrey and Sargent Aborn  
Eric Abraham  
Gloria and Bert Abrams  
Stephanie and David Abramson  
Madelyn Bucksbaum Adamson and  
Allen Adamson  
Adamson Associates Architects  
Joseph and Jacqueline Aguanno  
Airbus Americas  
The Allen Family  
AON  
Karen W. and Gregory K. Arenson  
Page Ashley  
Norma Ketay Asnes  
Lillian Barbash/Barbash Family Fund  
Martin and Rhoda Barr  
Diane Belfer  
Kathy and Gene Bernstein  
Murat Beyazit  
Bing Thom Architects  
Marilyn Friedman and Thomas Block  
Robert Brenner  
Peter & Celeste Brown  
Brownstein Hyatt Farber Schreck, LLP  
The Sander and Norma K. Buchman Fund  
Maggie and Don Buchwald  
Marian Burke  
Kristen Campolattaro  
Marcy Carsey  
Jill & John Chalsty  
Ted Chapin  
Christine Charles  
Adrienne and Jerry L. Cohen  
The Simon and Eve Colin Foundation  
Collins Building Services, Inc.  
John P. Connors, Jr.  
Dr. Gregory & Wendy Critchfield  
Dr. Michael Cucka  
Peggy and Dick Danziger  
Mark and Deborah D’Arcy  
Mr. and Mrs. Kevin Daugherty  
Scott M. Delman  
Jenny Brorsen and Rich DeMartini  
Elizabeth Diller and Ricardo Scofidio  
Robert and Martha Dinerstein  
Nancy Donohue and Diane Elam  
Ms. Domitilia M. dos Santos  
Brendan Dougher  
James Druckman  
Brendan and Martha Duval  
Martin L. Edelman  
Lisa and Sanford B. Ehrenkranz  
Elisabeth and Jim Ely  
Mr. and Mrs. Leroy Fadem  
Seymour Falik and Loraine Liebmann

Patricia Falkenberg  
Benjamin and Kristen Fay  
Kenneth R. Feinberg and Diane S. Feinberg  
John Feinblatt, Aber D. Unger Foundation  
Christy Ferer  
Arlene and Robert Fischer  
Jeanne Donovan Fisher  
Alan H. Fishman  
Tom and Deban Flexner  
Barbara W. Fox-Bordiga and the late  
Lord Bordiga  
Andrew Frackman and Emily Braun  
Frankfurt Kurnit Klein & Selz, PC  
Marc and Cammy Fuller  
Gail Furman  
Bruce & Lueza Gelb  
Gensler  
Barbara and Peter Georgescu  
Melissa M. Gibbs  
Ms. Lynn Gilbert  
Jennifer and Michael Glassman  
Dylan Glenn  
Tracie Golding Gerson  
Dorian Goldman and Marvin Israelow  
Stephanie Pottruck Goldman  
Goldman Sachs  
Steven and Mary Goldring  
Erik Gordon  
The Gordon Foundation  
Liz and Irwin Gotlieb  
Barbara Freid Gottesman  
Mr. and Mrs. Harry E. Gould, Jr.  
The Gramercy Park Foundation, Inc.  
James and Marilee Greenwald  
Joan and Charles Gross  
Naava and Sanford Grossman  
Gardner Grout Foundation  
Jennifer & Bud Gruenberg  
David Guin and Kym McCrain  
Mr. and Mrs. John H. Gutfreund  
Peter and Helen Haje  
Jill and Martin Handelsman  
J. Ira and Nicki Harris Family Foundation  
In memory of Dr. Jean Pierre Hartman by his  
wife Eva  
Patrick and Colleen Haskell  
Amy E. Hayes  
Hermione Foundation  
Janet and Arthur Hershaff  
Ian and Lea Highet  
The William Talbot Hillman Foundation, Inc.  
Hines  
Jane and Michael Hoffman  
Ruth W. Houghton  
Dr. Betty S. lu  
Jean and Maurice Jacobs  
Tikva and Zalmie Jacobs  
Ellen Jewett  
Alexandra K. Jones  
Joseph Hage Aaronson LLC  
Marnee and Eric Kaltman  
John Kander  
Robert and Debra Kasirer  
Rachel and Drew Katz Foundation  
Mr. and Mrs. John A. Kauffmann  
Linda and Ilan Kaufthal  
Mr. and Mrs. Stephen J. Ketchum  
Harold and Ruth Kingsberg  
Mr. and Mrs. S. Klagsbrun  
Hilary Ballon and Orin Kramer  
Judi and Douglas Krupp

Jill and Barry Lafer  
Leonard A. Lauder  
Bonnie Englehardt Lautenberg  
Alain and Helene LeBleu  
Isabelle R. Leeds  
Carol Leibenson  
Cindy & Richard Leibovitch  
Robert M. and Diane v.S. Levy  
Jeremy Liew  
Amy and Frank Linde  
Arthur and Susan B. Lindenauer  
Dorothy Litwin and Donald Brief  
London Fischer LLP  
Grace Lyu-Volckhausen  
Sondra and David S. Mack  
Susan and Matt Mackowski  
Duncan & Nancy MacMillan  
Ellen Chesler and Matthew J. Mallow  
Jeanne Manischewitz and Michael Doniger  
J. Robert Mann, Jr.  
Bernice Manocherian  
Jody G. Mansbach  
Judith and Michael Margulies  
Lizzy and Bryce Markus and Family  
Marsh  
Joanne and Norman Matthews  
John E. McAuliffe  
Dr. Timothy J. McNiff  
Shelley Mendell  
Tom and Tai Mendoza  
Carolyn and Gene Mercy  
Mrs. Susan Merinoff  
Eduardo and Gillian Mestre  
Ellen and Lee Metzendorf  
Anthony E. Meyer Family Foundation  
Sandy and Ed Meyer  
Mr. and Mrs. Glenn Miller  
Jean and Lewis Miller  
Mr. William R. Miller  
Jennifer and David Millstone  
Cheryl and Michael Minikes  
Evangline Morphos & Alan Brinkley  
The Morse Family Foundation, Inc.  
Brian and Cricket Mullaney  
Kathryn Myers  
Beth and Joshua Nash  
Frank Kotsen and Monique Neal  
Mitchell and Leslie Nelson  
Ofer and Shelly Nemirovsky  
The Netter Foundation  
Robin Chemers Neustein  
Nippon Steel & Sumitomo Metal U.S.A., Inc  
Beth and Michael Nochomovitz  
Noerr LLP  
Mr. and Mrs. Robert C. Nolan  
Ms. Eve Coulson and Mr. Nelson Obus  
Charles John O’Byrne  
Nancy and Tom O’Neil  
Seth Orlow & Myra Freed in memory of  
Leah Orlow  
Packsize International LLC  
Kent and Jean Papsun  
Herbert Pardes & Nancy Wexler  
Robin and Bob Paulson  
The Peckham Family Foundation  
Ann and Hollis Petersen  
Dr. Sally Peterson  
In Loving Memory of Nancy Pffiferling  
Tina and Mark Phillips  
Mr. Mark Pick

John Pirovano  
Judy and Jim Pohlman  
Jay Polonsky and Kay Oppenheimer  
Robert A. Press, M.D.  
Angela and Brian Raftery  
Susan and Kanti Rai  
Catherine A. Rein  
Repucom  
Scott Resnick  
The Karl F. Reuling Fund  
Philip W. Riskin Charitable Foundation, Inc.  
Jane and Paul Rittmaster  
Gail and Michael Rogers  
Daniel and Joanna S. Rose  
Jonathan F. P. and Diana Rose  
Jamie Rosenthal Wolf, David Wolf,  
Rick Rosenthal, Nancy Stephens and  
The Rosenthal Family Foundation  
Nina Rosenwald  
The Rowan Family Foundation  
Anne and Noah Roy  
Reed Rubin and Jane Gregory Rubin  
Bonnie J. Sacerdote  
Lynda and Robert Safron  
The Sagner Family Foundation  
The Salem Family  
Judy and Dirk Salz  
Emily and James Satloff  
Joan and Stuart Schapiro  
Mark D. Schein  
Irwin S. Scherzer Foundation  
Daniel Schwartz  
Joan C. Schwartz  
Scottish American  
Emily Segal and Andrew Ellis  
Rick and Monica Segal  
Serino/Coyne  
Shiv K. Sethi  
Nadine Shaoul and Mark Schonberger  
Lori and David Sherman  
Gil Shiva  
Mrs. C. Sidamon-Eristoff  
Ms. Jody Cukier Siegler  
Herbert and Arline Slepoy Charitable  
Foundation  
Mrs. Riva Ariella Ritvo-Slifka  
Joan and Joel Smilow  
Annaliese Soros  
Dr. Eric J. Spicer and Christiane Vanderlinden  
Barbaralee Diamonstein Spielvogel and  
Ambassador Carl Spielvogel  
Janet and Gilbert Spitzer  
The Stafford Family  
Stephen Stamas  
Judy and Michael Steinhardt  
Aaron and Betty Lee Stern Foundation  
Bonnie and Tom Strauss  
Lee and Roger Strong  
Sulentic Family Foundation  
Dr. Pavur R. Sundaresan  
Pamela & Allen B. Swerdlick  
Gloria and Philip Talkow  
Jay H. Tanenbaum  
The Tierney Family  
Joan H. Tisch  
TowerBrook Foundation  
Remy W. Trafelet  
Lee L. Traub  
UPS  
Mary Ellen and Karl von der Heyden  
Heather & Bill Vratots

Candace and Jonathan Wainwright  
Lana and Justin Walder  
Stacey Gillis Weber and Jeffrey A. Weber  
Bonnie T. Webster  
Elaine and Alan Weiler  
Carolyn Weinberg and Philip Korn  
Sue Ann Weinberg  
Wendell Family Foundation  
Judy and Josh Weston  
Anita and Byron Wien  
Susan and Benjamin Winter  
George M. Yeager  
Anonymous (20)

### \$1,000–\$2,499

Mr. and Mrs. Alan Alda  
All Mobile Video  
Dan & Stacie Allen  
O. Kelley Anderson  
In Memory of E. Nelson & Betty L. Asiel  
Atlantic Cine Equipment  
Kara Medoff Barnett and Dov Barnett  
Marion Bass Real Estate and Sam Bass  
Sabina Ahuja and Terence Battle  
Mr. and Mrs. T.G. Berk  
In Memory of Arthur M. Bernhardt  
The Bernstein Family  
Mallika Bhargava  
Kwesi C. Blair  
Nancy and Bob Blank  
Annie and Andrew Borsanyi  
Mr. and Mrs. Ludwig Bravmann  
Mr. and Mrs. Kenneth Breglio  
Julius & Trudy Brown  
Mary Callaghan  
Cammack Health  
Ivan Carbajal  
Michael A. and Mary A. Carpenter  
Una Chae & Jonathan Zucker  
R. Martin Chavez  
Lola L. Chlupsa  
Elizabeth B. Cho  
Mary Cirillo Goldberg  
Suzanne and Jeff Cohen  
Condé Nast  
Arika and Jon Couchman  
Covidien  
Dana Zucker and Brahm Cramer  
Mark and Lisa Cronin  
Ellie and Edgar M. Cullman, Jr.  
Andrew and Manju Curry  
Anibal Dams  
D. Ronald Daniel and Lise Scott  
Gordon J. Davis and Peggy Cooper Davis  
Davis Wright Tremaine LLP  
Dr. and Mrs. Charles H. Debrovner  
Guy de Chazal  
Steve and Connie Delehanty  
Collin M. Dennis  
Nick DiChiara  
Valerie and Charles Diker  
Dinesh and Kalpana Patel Foundation  
Keisha and Troy Dixon  
Mr. & Mrs. Harold Domnitch  
Billy and Tommie Dunavant  
Consuelo Duroc-Danner  
Ciara Burnham/Evercore Partners  
The Fascitelli Family Foundation  
Roger and Bambi Felberbaum  
Estelle and Jerry Finkelstein

## Annual Supporters

Grant & Pamela Finlayson  
Marjorie and Stephen Fiverson  
FK Partners  
Kim Fremont Fortunato  
Foster + Partners  
The Honorable William H. Frist, M.D.  
Sandy and George Garfunkel  
Alexander Garvin  
The Gerstner Family Foundation  
Joseph D. Gioe  
Herbert and Phyllis Girard Foundation  
Ms. Jean Golden  
Neil Goldstein  
Robin Gould  
Mr. Lawrence Grant and Mrs. Michele Grant  
The David and Alan Greene Family Foundation, Inc.  
Paula S. Greenman  
Terry and Michael Groll  
Eric F. Grossman  
Nicholas R. Gruy  
Anuj Gupta  
Carol Brown Hageman and Ivan Hageman  
Qusai Hammouri  
Lynne and Harold Handler  
Dr. Bjorn and Catherine Hanson  
Gerry Harper  
Jonathan Marshall Harris  
Robin N. Hayes  
The Hempel Family  
Buck Henry Charitable Fund Administered by the California Community Foundation  
Horacio and Julia Herzberg  
Betty and Rodger Hess  
James Hnat  
Joan and Irwin Hochberg  
Carol & Richard Hochman  
Joan Holmes  
Josephine Lawrence Hopkins Foundation  
The Hsu Family  
Sharon Coplan Hurowitz  
Raphael G. Jacobs  
Mr. and Mrs. Robert M. Jaffe  
Jamestown Technologies  
David Jaquet  
James S. Jardine  
Matthew Jill  
Dr. Joy to the World Foundation  
Ms. Yukako Kawata  
Bernard Kent  
Mrs. Ralph W. Kern  
Younghee Kim-Wait and Jarett F. Wait  
Megan Kingery  
Anne and Peter Klein  
June H. Koizumi  
Sandy and Eric Krasnoff  
Mr. and Mrs. George Krupp  
Mr. and Mrs. Benjamin Lambert  
Mr. and Mrs. Fernand Lamesch  
LaPlaca Cohen  
Abby Leigh  
Carl Folta and Molly Lemeris  
Nathan Leventhal and Katherine E. Brown  
Levin, Plotkin & Menin  
Fran and Jack Levy  
The Honorable John L. Loeb, Jr. and Sharon Handler  
Eileen Josten Lowe  
Mr. and Mrs. Ezra Mager  
Tina Livanos and Alexandros Makrygeorgos  
The Mansi Family

Mr. Michael Margitich  
Jessica and Joseph Mari  
Kevin Marrinan  
Tina and Andrew Mathias  
Ms. Rebecca McAfee  
Marie and Joe Melone  
The Janis and Alan Menken Foundation  
Allan and Vera Merrill  
Colette and Achim Moeller  
Edward and Liliana Neuberg  
O.D. Communications Inc.  
Nancy and Harold Oelbaum  
Onomatopoeia Inc.  
Charles and Jean Osgood  
Selwyn and Laura Oskowitz  
Otis Elevator Company  
Betsy and Justin Painter  
Michael and Gabrielle Palitz  
The Par Group  
Mr. Rafael Pardo Grandison  
Randall Paul, Foundation for Religious Diplomacy  
Laurence Penn and Jill Oberlander  
Robert M. Pennoyer  
Perakis Family  
Evan Picoult  
Pillsbury Winthrop LLP  
Roni and Josh Podell  
General Colin L. and Alma Powell  
Michael & Jane Powell  
Protiviti  
Lisa and Jonathan Pruzan  
Debra and Andrew Rachleff  
Aline Raisler  
Susan and Lewis Rapaport  
Mr. and Mrs. Ariel Recanati  
Kenneth and Judith Reiss  
Judith and Burton Resnick  
Barbara J. Riley  
David and Susan Rockefeller  
Lesley & Ted Rosenthal  
Mr. and Mrs. Andrew Safran  
Michael and Donna Sasso  
Ms. Elisa M. Scatena  
Sanford J. Schlesinger and Lianne Lazetera  
Mrs. Gerald Schoenfeld  
Michael & Patricia Schumaecker  
Sara Lee and Axel Schupf  
Michael Park and Sarah Seo  
Marsha and Jerry M. Seslowe  
Kimberly and Viqar Shariff  
Boaz Shattan, Jr.  
Ted and Mary Jo Shen  
Julie H. Shin  
Dennis Shirshikov  
Dr. Robert Silver  
Jack and Shirley Silver  
Stanley Silverman  
John B. Simoni, Jr.  
Joseph Slakas  
Mr. and Mrs. Mike Slosberg  
Grant and Jacqui Smith  
Kevin D. Eng & Un Hae Song  
Vesna Straser and Brandon Weber  
Marlene and Harold Strauss  
Carol and Daniel Strickberger  
Eash Sundaram  
Maureen and John Sweeney  
Donald G. Taylor  
Tiger Baron Foundation

Phyllis Triple  
E. N. Ellis and Patricia Truscelli  
In Memory of Ernest E. Tyrrasch  
Judith and Menno Verhave  
George and Sal Wen-Capolarello  
Naida S. Wharton Foundation  
Mr. Bob Whitman  
John H. Williams  
Kathryn Wylde, Partnership For New York City  
Dr. Eviatar Yemini  
Anonymous (17)

### Business Advisory Council

The Business Advisory Council provides key strategic insights on a number of the most challenging issues facing Lincoln Center and the cultural fabric of New York City.

Katherine Farley (Co-Chair)  
John B. Hess (Co-Chair)  
Steven R. Swartz (Co-Chair)  
Robert Alexander  
Douglas Band  
Jessica Bibliowicz  
Cathie Black  
Jeff T. Blau  
Martin Bussmann  
Russell Carson  
Ravenel Curry  
Philippe Dauman  
Andrea Jung  
Charles Kaye  
Marie-Josée Kravis  
Howard Marks  
Anne Welsh McNulty  
Indra Nooyi  
Yana Peel

### China Advisory Council

The China Advisory Council guides and supports Lincoln Center in its work with Chinese institutions and arts managers, fostering cultural exchange between the United States and China in the performing arts and arts education.

Yang Lan (Co-Chair)  
Katherine Farley (Co-Chair)  
Lang Lang (Honorary Chair)  
Joseph Bae  
Angela Chao  
Guoqing Chen  
Shi-Zheng Chen  
Irene Chu  
Victor Chu  
Fenglei Fang  
Suning Fang  
Akarin Gaw  
Mali Sananikone Gaw  
James Hexter  
David Henry Hwang  
Handel Lee  
Ning Liang  
Vincent Lo  
Yiling Mao  
Jinghui Meng  
Dee Poon  
Shen Wei  
Anna Pao Sohmen  
Tan Dun  
Frank Tang  
Boming Wang

Oliver P. Weisberg  
Nora Wu  
Clara Wu Tsai  
Adam Chikeung Yu  
Allan Zeman  
Ruheng Zhao

### Latin American Advisory Council

The Latin American Advisory Council is composed of important and influential leaders who provide intellectual, social, and financial capital to help identify, prioritize, and seize opportunities for collaboration and impact across Latin American countries.

Alain Belda  
Ana Maria Diniz  
Nizan Guanaes  
Roberto Hernández  
Claudia Madrazo  
Renata de Camargo Nascimento  
Ma. Catalina Saieh  
Sonia Sarmiento

### Government

Lincoln Center is deeply grateful to the government agencies and elected representatives listed below for their support.

The Honorable Bill de Blasio,  
Mayor of the City of New York  
The Honorable Gale A. Brewer,  
Manhattan Borough President  
The Honorable Fernando Cabrera,  
New York City Council  
The Honorable Elizabeth S. Crowley,  
New York City Council  
The Honorable Inez E. Dickens,  
New York City Council  
The Honorable Vincent J. Gentile,  
New York City Council  
The Honorable Ben Kallos,  
New York City Council  
The Honorable Peter Koo,  
New York City Council  
The Honorable Mark Levine,  
New York City Council  
The Honorable I. Daneek Miller,  
New York City Council  
The Honorable Helen Rosenthal,  
New York City Council  
The Honorable Ritchie Torres,  
New York City Council  
The Honorable Eric Ulrich,  
New York City Council  
The Honorable Paul Vallone,  
New York City Council  
The Honorable James Van Bramer,  
New York City Council  
New York City Department of Cultural Affairs,  
Tom Finkelpearl, Commissioner  
New York City Department of Education,  
Carmen Fariña, Chancellor  
New York City Department of Parks and Recreation,  
Mitchell J. Silver, Commissioner  
The Honorable Andrew M. Cuomo,  
Governor of New York State  
The Honorable Linda B. Rosenthal,  
New York State Assembly  
New York State Council on the Arts,  
Aby Rosen, Chair

National Endowment for the Arts,  
Jane Chu, Chairman  
The Honorable Charles E. Schumer,  
United States Senate  
The Honorable Kirsten E. Gillibrand,  
United States Senate

### Planned Giving: The Bravo Society

Lincoln Center greatly appreciates the generosity and foresight of those individuals who have included a provision for Lincoln Center in their estate planning.

Ms. Claudia Adams  
Mr. Robert Ardini  
Gunilla Berlin  
Jed Bernstein  
Estate of Katherine T. Bidwell  
Ms. Jane Boutwell  
Mr. Paul Bowley  
Eric Brauer  
Carol and Robert Braun  
Dr. and Mrs. Alexander Broden  
Ms. Hillary Brown  
David G. Clough  
Mr. Charles Edward Cole  
Mr. Lewis B. Cullman  
Mr. and Mrs. Stephen J. Delehanty  
Jamie deRoy  
Stephen W. Fillo  
Evelyn M. Finklestein, Esq.  
Stuart M. Fischman  
Ms. Lorraine Fox  
Gene and Edith Friedman  
Barbara Gottesman  
Sharon J. Handler  
In memory of Dr. Jean Pierre Hartman by his wife Eva  
Mr. Heinz K. Hofmeister  
Ruth W. Houghton  
Mrs. Jane B. Jacobs  
Peter H. Judd  
Ms. Ginger D. Karren  
Dr. Sivia Kaye  
Stuart and Isabel Kessler  
Tom and Jody King  
Ms. Francine S. Kittredge  
Mr. John D. Knoernschild  
Mr. and Mrs. I. Stanley Krieger  
Ms. Mary E. Langford  
Evelyn H. Lauder Charitable Lead Annuity Trust  
Mr. Berkley D. Leeds  
Ms. Linda Leven  
Nathan Leventhal and Katherine E. Brown  
Florence Lotrowski  
Mrs. Virginia Lyon  
Flora Major  
Mr. and Mrs. Peter L. Malkin  
Ms. Mahnaz Maqsudi  
Mr. and Mrs. Anthony D. Marshall  
Ms. Anne M. Morris  
Mrs. K. Fred Netter  
Mr. Stanley Newman  
Alan A. and Barbara Nicoll  
Martin and Suzanne Oppenheimer  
Gerri and Lester Pollack  
Ms. Dina Powell  
Mr. Desmond Printz

Ms. Eleanor X. Pripadcheff  
Ms. Lourdes Proto  
Mr. Francis H. Rasmus, Jr.  
Mr. and Mrs. Bernard Richards  
Martin Riskin  
Ms. Roberta Robins  
Ms. Susan Robinson  
Ms. Rama Rodvien  
Ms. Gloria Roma  
Ms. Evelyn Ronell  
Ms. Joyce Rosen  
Sheila M. Rosen  
Judy and Dirk Salz  
Michael L. Samuels  
Mr. John F. Scheich  
Dr. Jayne Schneider-Rynar  
Mr. John Seaman  
Dr. Sidney Shanker  
Ms. Arlene Shuler  
Jack and Shirley Silver  
Ms. Christine E. Sohn  
Mr. Philip F. Stattel  
Sonya and Leo Tick  
Ms. Josephine Ueno  
Ann and Tom Unterberg  
Mr. Marshall M. Weinberg  
Ms. Rose Lynn Weinstein  
Mr. and Mrs. Stephen B. Weinstein  
Mrs. Sarah Weisberg  
Mrs. George Weissman  
In Memory of Rowenna Wight White  
Dr. Caroline E. Rubinstein and Phillip M. Winegar  
Marilyn M. Wolf  
Mr. and Mrs. Jerold Zieselman  
Ms. Carol Zuckerman

We also thank the members of the Bravo Society who wish to remain anonymous.

### Lincoln Center Counsels' Council

Lincoln Center is extremely grateful for the pro bono legal services provided by the members of the following law firms and corporate legal departments.

ASCAP  
Barclay Damon, LLP  
Cahill Gordon & Reindel LLP  
Carter Ledyard & Milburn LLP  
Connell Foley LLP  
Covington & Burling LLP  
DLA Piper LLP  
Davis & Gilbert LLP  
Davis Polk & Wardwell LLP  
Ernst & Young LLP  
Gibson, Dunn & Crutcher LLP  
Goetz Fitzpatrick LLP  
Kauff McGuire & Margolis LLP  
Nixon Peabody LLP  
Paul, Hastings LLP  
Paul Weiss Rifkind Wharton & Garrison LLP  
Peter Brown & Associates, pllc  
Sidley Austin LLP  
Skadden, Arps, Slate, Meagher & Flom, LLP  
Venable LLP  
Wachtell, Lipton, Rosen & Katz/Ilene Gotts Weil, Gotshal & Manges, LLP  
Wildes & Weinberg, P.C.  
Willkie Farr & Gallagher LLP

## Balance Sheets—Consolidated

June 30, 2015 and 2014 (\$000)

ASSETS	2015	2014
Cash and cash equivalents	\$15,693	\$21,262
Restricted cash	25,029	17,604
Accounts and investment income receivable	12,880	12,926
Contributions and grants receivable	99,561	80,338
Prepaid expenses, inventory, and other assets	12,342	10,709
Investments	241,808	236,714
Fixed assets, net	344,484	350,401
<b>Total assets</b>	<b>\$751,797</b>	<b>\$729,954</b>
<b>LIABILITIES</b>		
Accounts payable and accrued expenses	\$18,638	\$16,295
Fair value of interest rate swaps	44,688	38,826
Deferred revenue	9,195	10,315
Long-term debt	252,169	252,445
<b>Total liabilities</b>	<b>\$324,690</b>	<b>\$317,881</b>
<b>NET ASSETS</b>		
Unrestricted:		
General operating	\$11,377	\$11,369
Board designated	119,095	118,717
Redevelopment and other physical capital	132,930	121,686
Total unrestricted	\$263,402	\$251,772
Temporarily restricted	66,756	63,798
Permanently restricted	96,949	96,503
Total net assets	\$427,107	\$412,073
<b>Total liabilities and net assets</b>	<b>\$751,797</b>	<b>\$729,954</b>

Lincoln Center is a nonprofit organization exempt from income tax under Section 501 (c) (3) of the Internal Revenue Code.

The Balance Sheets and Statements of Activities are summarized here. A complete copy of Lincoln Center's audited financial statements are available upon request. Call 212.875.5255 or fax your request to 212.875.5275.

## Statements of Activities—Consolidated

for the years ended June 30, 2015 and 2014 (\$000)

OPERATING SUPPORT AND REVENUE	2015	2014
Contributions, grants, and special events, net	\$28,792	\$26,725
Investment return for current operations	4,208	4,160
Box office and other program service revenue	16,453	11,725
Facilities services and rental income	58,198	57,250
Other income	2,752	3,636
Net assets released from restrictions	21,076	19,784
<b>Total general operating revenue</b>	<b>\$131,479</b>	<b>\$123,280</b>
<b>OPERATING EXPENSES</b>		
Performance presentations	\$27,168	\$24,903
Media development (Live From Lincoln Center)	5,819	4,218
Education and outreach	7,874	5,899
Facilities management and services	60,401	57,172
Visitor and patron services	2,053	2,323
New ventures and special projects	2,330	2,253
<b>Total program services</b>	<b>\$105,645</b>	<b>\$96,768</b>
Management and general	18,776	17,931
Fundraising	6,050	5,099
<b>Total operating expenses</b>	<b>\$130,471</b>	<b>\$119,798</b>
Transfers	(1,000)	(500)
<b>EXCESS OF SUPPORT AND OPERATING REVENUE OVER EXPENSES</b>	<b>\$8</b>	<b>\$2,982</b>
<b>OTHER CHANGES IN UNRESTRICTED NET ASSETS</b>		
Board designated support and LCDP constituent funding	\$4,717	\$3,781
Investment return	221	13,054
Net unrealized loss on swap agreements	(5,863)	(1,712)
Net assets released from restrictions	56,492	22,447
Depreciation and amortization, net	(16,385)	(15,912)
Interest and other financing costs	(12,424)	(12,334)
Redevelopment project expenses	(16,137)	(662)
Transfers	1,000	500
<b>Total other changes in unrestricted net assets</b>	<b>\$11,621</b>	<b>\$9,162</b>
<b>CHANGES IN RESTRICTED NET ASSETS</b>		
Restricted contributions and grants	\$75,720	\$50,216
Investment return	5,252	18,928
Net assets released from restrictions	(77,567)	(42,230)
<b>Total changes in restricted net assets</b>	<b>\$3,405</b>	<b>\$26,914</b>
<b>TOTAL CHANGES IN NET ASSETS</b>		
<b>Total changes in net assets</b>	<b>\$15,034</b>	<b>\$39,058</b>
Net assets at beginning of the year	412,073	373,015
<b>Net assets at end of the year</b>	<b>\$427,107</b>	<b>\$412,073</b>



## Lincoln Center Senior Management Team

Jed Bernstein, *President/CEO*

Ron Austin, *Executive Director  
Lincoln Center Development Project*

Kara Medoff Barnett, *Managing Director  
Lincoln Center International*

Vin Cipolla, *Executive Director  
David Geffen Hall Campaign*

Mary Costa, *Executive Director  
Lincoln Center Legends*

Peter Duffin, *Senior Vice President  
Brand and Marketing*

Russell Granet, *Executive Director  
Lincoln Center Education*

David Link, *Chief Digital Officer*

Jane Moss, *Ehrenkranz Artistic Director*

Liza Parker, *Executive Vice President  
Lincoln Center Operations & Human Resources*

Tamar C. Podell, *Executive Vice President  
Planning & Development*

Nigel Redden, *Director  
Lincoln Center Festival*

Lesley Friedman Rosenthal, *Senior Vice President  
General Counsel & Secretary*

Dan Rubin, *Executive Vice President  
Chief Financial Officer*

Greg Sheps, *Senior Vice President  
Marketing Partnerships*

Photos: Cover collage photos by ©Stephanie Berger, Matt Dine, David Flores and Kevin Yatarola; Lincoln Center: Iñaki Vinaixa; p.2: LC Kids: David Flores; p.3: Jed Bernstein and Katherine Farley: Sean Carroll Photography; p.4: Silent Disco: ©Iñaki Vinaixa; p.7-8: Boro-Linc: David Flores; p.9: Poet-Linc: Viviana Benitez; Family-Linc: Julianne Alberty; p.10: *Delusion of the Fury*: ©Stephanie Berger; p.13: Langrée and the Mostly Mozart Festival Orchestra: Matt Dine; José "El Canario" Alberto: Kevin Yatarola; p.14: Billy Porter: Kevin Yatarola; *Miss Julie*: ©Stephanie Berger; p.15: *St. Matthew Passion*: ©Richard Termine; Garth Fagan Dance: Kevin Yatarola; p.16: *Up and Away*: Alexis Buatti-Ramos; p.19: Audition Boot Camp: Christopher St. Clair; p.20: Lincoln Center Education: David Flores; p.21: Summer Forum: Christopher St. Clair; Next Stage: David Flores; p.24: Maria Kochetkova in Tomasson's *Romeo & Juliet*: ©Erik Tomasson; p.28: *Sweeney Todd*: ©Chris Lee/NY Philharmonic; The First Lady of China Madame Peng Liyuan and Katherine Farley: ©Stephanie Berger; p.29: Global Exchange: Sean Carroll Photography; p.30: Audition Boot Camp: Haghi Suka; p.42-43: Lincoln Center: Iñaki Vinaixa

A copy of the last Annual Report filed with the New York State Office of the Attorney General may be obtained by writing to the New York State Office of the Attorney General, Charities Bureau, 120 Broadway, New York, NY 10271 or to Lincoln Center for the Performing Arts, Inc., 70 Lincoln Center Plaza, New York, NY 10023-6583, Attention: Annual Report.

© 2015 Lincoln Center for the Performing Arts, Inc. American Songbook, CenterCharge, Capacities for Imaginative Learning, Imagination Award, Imagination Conversation, Lincoln Center Institute, Live From Lincoln Center, Midsummer Night Swing, Mostly Mozart, The Five Arches & Design, and LC in the BX are registered trademarks and service marks of Lincoln Center for the Performing Arts, Inc.



## Lincoln Center Board of Directors

### CHAIRMAN

Katherine Farley

### PRESIDENT

Jed Bernstein

### VICE CHAIRS

Adrienne Arsht  
*Chairman Emerita*  
*TotalBank*

David Alan Coulter  
*Special Limited Partner*  
*Warburg Pincus LLC*

Richard K. DeScherer  
*Chief Legal & Compliance Officer*  
*Bloomberg L.P.*

Joel S. Ehrenkranz  
*Partner*  
*Ehrenkranz Partners L.P.*

Roy Furman  
*Vice Chairman*  
*Jefferies LLC*

John B. Hess  
*Chief Executive Officer*  
*Hess Corporation*

Bruce Kovner  
*Chairman*  
*CAM Capital*

Philip L. Milstein  
*Principal*  
*Ogden CAP Properties*

Laurie M. Tisch  
*President*  
*Laurie M. Tisch Illumination Fund*

Ann Ziff

### TREASURER

Blair W. Effron  
*Founding Partner*  
*Centerview Partners LLC*

### DIRECTORS

Ronnie Ackman

Robert Appel  
*President*  
*Appel Associates*

Joseph Y. Bae  
*Managing Partner*  
*KKR Asia*

Christina Baker

Keith T. Banks  
*President, U.S. Trust*  
*Bank of America*  
*Private Wealth Management*

Renée Belfer

Frank A. Bennack, Jr.  
*Executive Vice Chairman of the Board*  
*And Chairman of the Executive Committee*  
*Hearst*

Richard S. Braddock

Judith-Ann Corrente  
*President & CEO*  
*Metropolitan Opera*

Daniel Crown  
*President*  
*Foray Entertainment and*  
*Red Crown Productions*

James G. Dinan  
*Founder and Chief Executive Officer*  
*York Capital Management*

Beth Dozoretz  
*President*  
*Dozoretz Family Foundation*

Jay S. Fishman  
*Chairman of the Board*  
*The Travelers Companies, Inc.*

Harold Ford, Jr.  
*Managing Director*  
*Morgan Stanley*

William E. Ford  
*Chief Executive Officer*  
*General Atlantic LLC*

Bart Friedman  
*Senior Partner*  
*Cahill Gordon & Reindel, LLP*

Bennett J. Goodman  
*Co-Founder and Senior Managing Director*  
*GSO Capital Partners*

Efraim Grinberg  
*Chairman & CEO*  
*Movado Group, Inc.*

Audrey Butvay Gruss  
*President*  
*The Audrey and Martin Gruss Foundation*

Mimi Haas  
*President*  
*Mimi and Peter Haas Fund*

William B. Harrison, Jr.  
*Former Chairman & CEO*  
*JPMorgan Chase & Co.*

Gerald L. Hassell  
*Chairman & CEO*  
*BNY Mellon*

Rita E. Hauser  
*President*  
*The Hauser Foundation, Inc.*

Jim Herbert  
*Chairman and*  
*Chief Executive Officer (Founding)*  
*First Republic Bank*

J. Tomilson Hill  
*Vice Chairman*  
*The Blackstone Group*

David A. Hunt  
*President and Chief Executive Officer*  
*Prudential Investment Management*

Robert A. Iger  
*Chairman & CEO*  
*The Walt Disney Company*

Elliot S. Jaffe  
*Chairman & Co-Founder*  
*Ascena Retail Group, Inc.*

Steven A. Kandarian  
*Chairman, President and*  
*Chief Executive Officer*  
*MetLife Inc.*

Honorable Judith S. Kaye  
*Skadden, Arps, Slate, Meagher & Flom, LLP*

Sheryl Drangel Kaye

Somesh Khanna  
*Director*  
*McKinsey and Company*

David H. Koch  
*Executive Vice President*  
*Koch Industries, Inc.*

Peter S. Kraus  
*Chairman and CEO*  
*Alliance Bernstein*

Shelly Lazarus  
*Chairman Emeritus*  
*Ogilvy & Mather*

Thomas H. Lee  
*President*  
*Thomas H. Lee Capital*

Betty Levin  
*President*  
*Corporate Art Directions*

Bryan Lourd  
*Partner, Managing Director and*  
*Co-Chairman*  
*Creative Artists Agency*

Michael Lynton  
*Chief Executive Officer*  
*Sony Entertainment, Inc.*

Peter W. May  
*President and Founding Partner*  
*Triam Partners*

William R. Miller, CBE  
*Former Vice Chairman*  
*Bristol-Myers Squibb*

William C. Morris  
*Chairman of the Executive Committee*  
*The Metropolitan Opera Association*

Anna Nikolayevsky  
*CIO*  
*Axel Capital Management*

Indra Nooyi  
*Chairman and Chief Executive Officer*  
*PepsiCo, Inc.*

Daniel S. Och  
*Chief Executive Officer*  
*Och-Ziff Capital Management Group*

James P. O'Shaughnessy  
*Chairman & CEO*  
*O'Shaughnessy Asset Management*

Joseph R. Perella  
*Founding Partner and Chairman*  
*Perella Weinberg Partners LLP*

Ingeborg Rennert

Julian Robertson  
*Chairman*  
*Tiger Management L.L.C.*

Jim Rosenthal  
*Chief Operating Officer*  
*Morgan Stanley*

Stephen M. Ross  
*Chairman and Founder*  
*Related Companies*

David M. Rubenstein  
*Co-Founder and Co-CEO*  
*The Carlyle Group*

Oscar S. Schafer  
*Chairman*  
*Rivulet Capital, LLC*

Ralph Schlosstein  
*President & CEO*  
*Evercore*

Max R. Shulman  
*Chairman of the Board*  
*School of American Ballet*

Gayfryd Steinberg

Steven R. Swartz  
*President and Chief Executive Officer*  
*Hearst Corporation*

Motomu Takahashi  
*President & Chief Executive Officer*  
*Mitsui & Co. (U.S.A), Inc.*

Chandrika K. Tandon  
*Chairman*  
*Tandon Capital Associates*

Ann Tenenbaum  
*Co-President*  
*MTheory*

John A. Thain  
*Chairman and CEO*  
*CIT Group Inc.*

Alair A. Townsend

Ann Unterberg  
*Chairman*  
*Lincoln Center Education*

John E. Waldron  
*Global Co-Head Investment Banking*  
*Goldman Sachs*

George Walker  
*Chairman and CEO*  
*Neuberger Berman Group, LLC*

Christopher J. Williams  
*Chairman and Chief Executive Officer*  
*The Williams Capital Group, L.P.*

John Wren  
*President and CEO*  
*Omnicom Group*

Clara Wu Tsai  
*Executive Director*  
*Joe and Clara Tsai Foundation*

### EX OFFICIO

Hon. Bill de Blasio  
*The Mayor of the City of New York*

Barry H. Berke  
*Mayoral Designee*

Hon. Melissa Mark-Viverito  
*Speaker*  
*New York City Council*

Frank Carucci  
*Speaker's Designee*

Hon. Thomas Finkelppearl  
*Commissioner*  
*New York City Department*  
*of Cultural Affairs*

Hon. Mitchell Silver  
*Commissioner*  
*New York City Department*  
*of Parks and Recreation*

### CHAIRMEN EMERITI

Amyas Ames (1906–2000)

Frank A. Bennack, Jr.

Bruce Crawford

John D. Rockefeller 3rd (1906–1978)

Martin E. Segal (1916–2012)

Beverly Sills (1929–2007)

George Weissman (1919–2009)

### DIRECTORS EMERITI CO-CHAIRS

Hon. William H. Donaldson

Peter L. Malkin

### DIRECTORS EMERITI

Mrs. James A. Block

Diane M. Coffey

Bruce Crawford

Peter Frelinghuysen

Harvey Golub

Eugene P. Grisanti

Ruth W. Houghton

June Noble Larkin

Martin J. Oppenheimer

Thomas A. Renyi

Mrs. Frederick P. Rose

Susan Rudin

Walter V. Shipley

Howard Solomon

Daisy M. Soros

Hon. Carl Spielvogel

Stephen Stamas

Ronald P. Stanton

Lillian Vernon

*As of October 8, 2015*

# Lincoln Center's Resident Organizations

The Chamber Music Society of Lincoln Center

The Film Society of Lincoln Center

Jazz at Lincoln Center

The Juilliard School

Lincoln Center Theater

The Metropolitan Opera

New York City Ballet

New York Philharmonic

The New York Public Library for the Performing Arts

School of American Ballet

Lincoln Center for the Performing Arts



Seen it?

## Lincoln Center

70 Lincoln Center Plaza  
New York, NY 10023-6583  
212.875.5000  
[LincolnCenter.org](http://LincolnCenter.org)